

# POWER CABLE FEED & RETURN

RJM Company  
360-828-5732  
www.rjmcompany.com



## Power Cable Feed & Return

The Power Cable Feed & Return (PCFR) is designed to help you run long lengths of cable into and out of lines. It will help you cut through roots or heavy blockages in any drain line.

## Standard Package

The PCFR is standard equipment on The King (DM55) and The Knight (DM30), and is an option on The Baron (DM10).

## Adjusting PCFR by Cable Size

- 3/4" Cable - 6 Sizing Plates per Block
- 11/16" Cable - 5 Sizing Plates per Block
- 5/8" Cable - 4 Sizing Plates per Block
- 1/2" Cable - 2 Sizing Plates per Block
- 13/32" Cable - 1 Sizing Plate per Block
- 3/8" Cable - 0 Sizing Plates per Block



## PCFR Specifications (specs are approximates)

<i>Length</i>	
PCFR .....	6"
<i>Width</i>	
PCFR .....	9"
<i>Height</i>	
PCFR .....	12"
<i>Weight</i>	
PCFR .....	12 lbs.

### POWER CABLE FEED & RETURN PISTON KIT

Kit Part #	Description	Included Parts #	Quantity	Description of included Parts
PCFR23SER	Power Cable Feed & Return Piston Kit	PCFR14 PCFR25 RRing1 SB1 WA20	1 1 2 1 2	PCFR Piston PCFR Rotation Pin 11/16" x 1/32" x 11/32" External Retaining Ring PCFR Drive Bearing 1/2" x 3/4" x 1/16" Washer

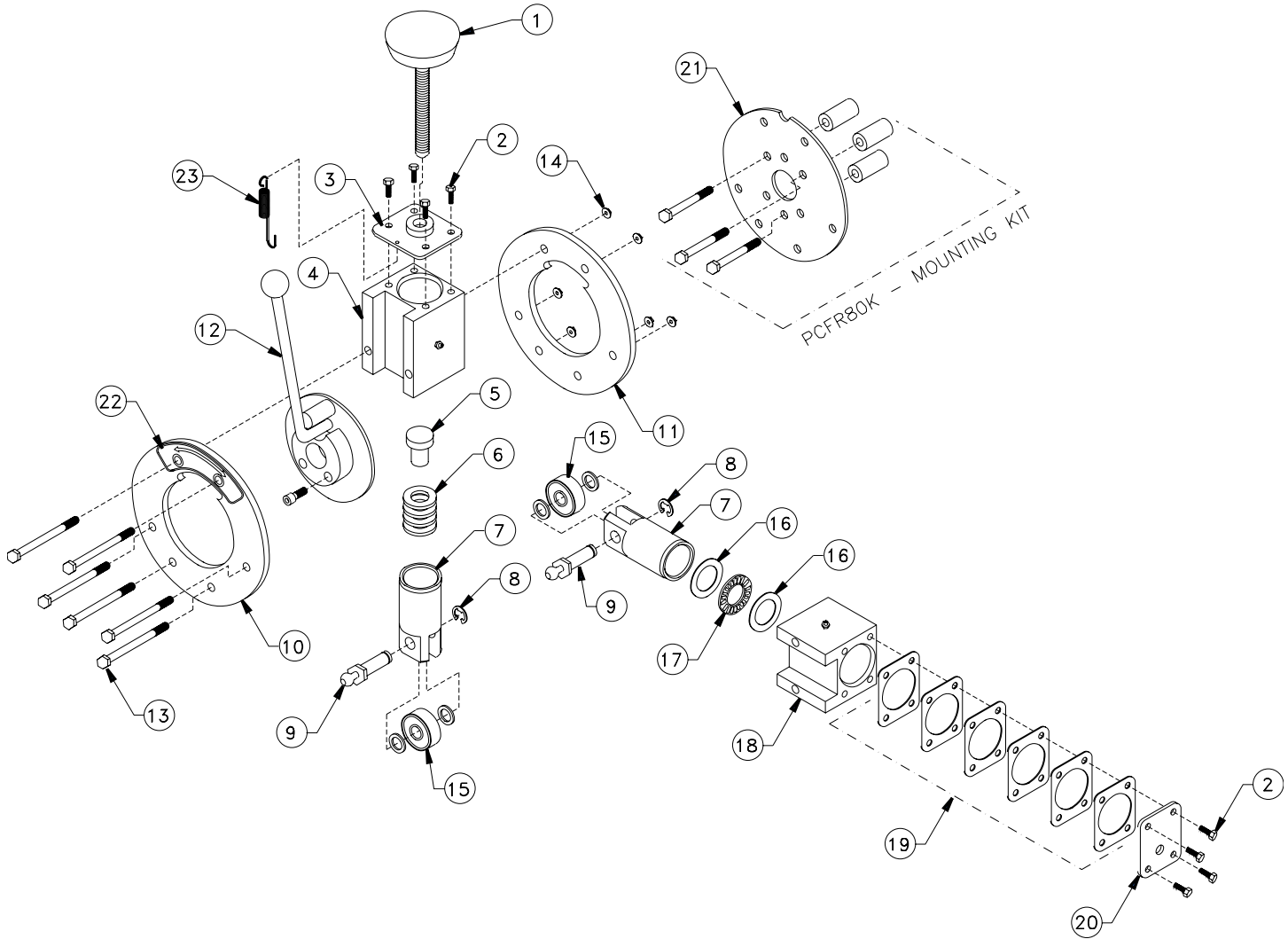
### POWER CABLE FEED & RETURN BEARING KIT

Kit Part #	Description	Included Parts #	Quantity	Description of included Parts
PCFR22SER	Power Cable Feed & Return Bearing Kit	SB1 WA20	1 2	PCFR Drive Bearing 1/2" x 3/4" x 1/16" Washer

### POWER CABLE FEED & RETURN Adapter KIT

Kit Part #	Description	Included Parts #	Quantity	Description of included Parts
PCFR80K	Power Cable Feed & Return Adapter Kit for The King (DM55), The Knight (DM30), and The Baron (DM10).	HHCS11 PCFR80A PCFR80B	3 1 3	5/16"-18 x 2" Hex Head Cap Screw Adapter Plate Spacer for Adapter Plate

## PCFR Part # PCFR





The entire line item in grey or light red identifies the name of an entire assembly. The colored part numbers below it identify all the parts that make up the complete assembly. The items in yellow identify the name of an entire assembly that is within another assembly. You can purchase the entire assembly, or just the individual parts.

PARTS IDENTIFICATION			
Item #	Qty.	Part #	Description
1	1	KNOB3	Knob, Pressure Control
2	12	HHCS29	1/4"-20 x 3/4" Hex Head Cap Screw
3	1	PCFR15	Pressure Plate, Upper
4	1	PCFR13	Housing Block, Upper
5	1	PCFR17	Spring Pad
6	1	PCFR16	Compression Spring
7	3	PCFR14	Piston, Upper and Lower
8	3	RRING1	External "E" Ring
9	3	PCFR25	Rotation Pin
10	1	PCFR10	Mounting Disc, Front
11	1	PCFR11	Mounting Disc, Rear
12	1	PCFR12	Direction Disc Assembly
	1	PCFR12E	Direction Disc
	1	KNOB2	Knob, Black Plastic
	1	PCFR33	Wear Ring
	2	SHCS6	1/4"-28 x 5/8" Socket Head Cap Screw
13	6	HHCS12	5/16"-18 x 3-1/2" Hex Head Cap Screw
14	6	FLNUT3	5/16"-18 Hex Flange Nut, Locking
15	3	PCFR22SER	PCFR Bearing Kit
	1	SB1	Drive Bearing
	2	WA20	Machine Bushing
16	4	PCFR29	Thrust Washer
17	2	PCFR28	Thrust Bearing
18	2	PCFR18	Housing Block, Lower
19	12	PCFR20	Sizing Plate (Lower Housing Blocks Only)
20	2	PCFR21	Pressure Plate, Lower
21	1	PCFR80K	PCFR Mounting Kit
	1	PCFR80A	Adapter Plate
	3	PCFR80B	Spacers
	3	HHCS11	5/16"-18 x 2" Hex Head Cap Screw
22	1	PCFR9	Decal, Reverse/Neutral/Forward
23	1	MM35	Extension Spring
	3	PCFR23SER	PCFR Piston Kit (Kit includes items #7, #8, #9, and #15)



## Bearing Kit

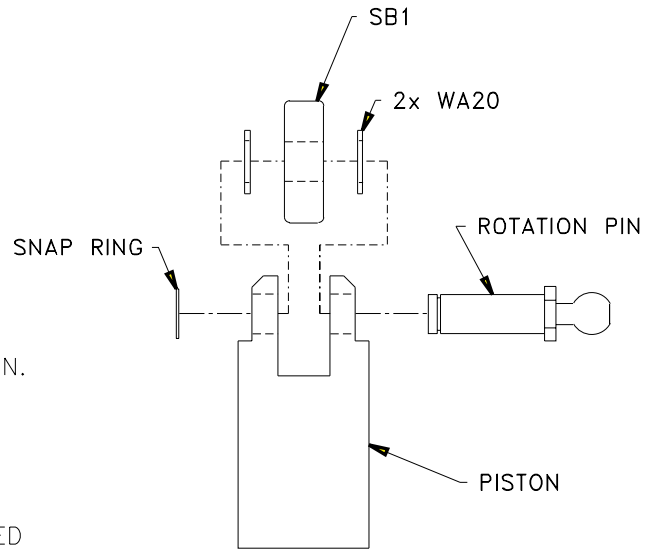
THE PCFR22SER BEARING KIT INCLUDES THE FOLLOWING:

- \* (1) SB1 BEARING
- \* (2) WA20 SPACERS

IF THE PCFR WAS PURCHASED AND/OR MANUFACTURED ON OR PRIOR TO 1995 OR IF ONE OF THE FOLLOWING CONDITIONS OCCUR WHILE INSTALLING THE BEARING KIT;

- 1) THE SB1 BEARING FITS LOOSELY ON THE ROTATION PIN.
- 2) THE SB1 BEARING RUBS OR TOUCHES THE PISTON.
- 3) THE SB1 BEARING WILL NOT ROTATE WHEN INSTALLED.

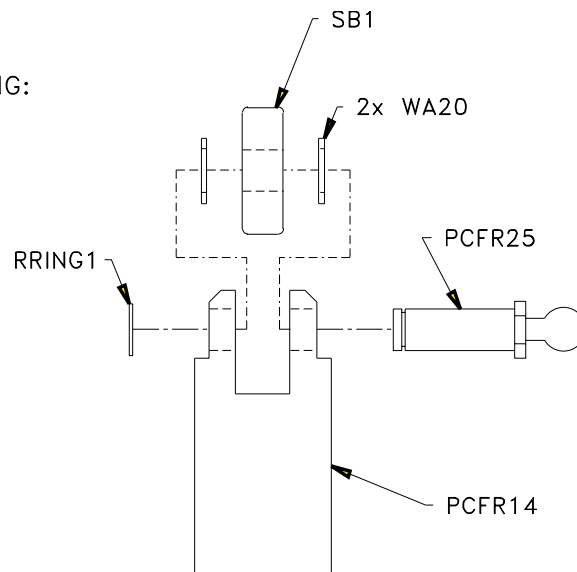
THE PCFR23SER PISTON KIT WILL NEED TO BE PURCHASED SEPARATELY TO COMPLETE THE REPAIR TO THE PCFR AND IT REQUIRES THREE (3) PCFR23SER KITS TO PERFORM A COMPLETE REPAIR.



## Piston Kit

THE PCFR23SER PISTON KIT INCLUDES THE FOLLOWING:

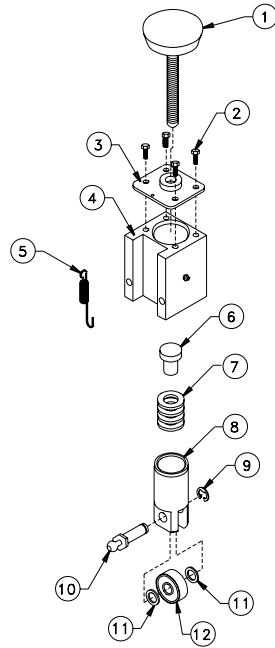
- \* (1) PCFR14 UPPER/LOWER PISTON
- \* (1) RRING1 "E"-RING CLIP
- \* (1) SB1 BEARING
- \* (2) WA20 SPACERS
- \* (1) PCFR25 ROTATION PIN



\*\* THREE (3) PCFR23SER KITS ARE REQUIRED TO PERFORM A COMPLETE REPAIR OF THE PCFR.

## PCFR Part # PCFR

### Spring Kit



#### PCFR – SPRING KIT

No.	Qty.	Part No.	Description
1	1	KNOB3	PRESSURE CONTROL KNOB
2	4	HHCS29	1/4-20 x .75 HEX HD CAP SCRW
3	1	PCFR15	UPPER PRESSURE PLATE
4	1	PCFR13	UPPER HOUSING BLOCK
5	1	MM35	EXTENSION SPRING
6	1	PCFR17	SPRING PAD
7	1	PCFR16	COMPRESSION SPRING
8	1	PCFR14	UPPER/LOWER PISTON
9	1	RRING1	EXTERNAL "E" RING
10	1	PCFR25	ROTATION PIN
11	2	WA20	MACHINE BUSHINGS
12	1	SB1	DRIVE BEARING

PCFR-KIT1 = (3)(5)

PCFR-KIT2 = (3)(4)(5)

PCFR-KIT3 = (2)(3)(4)(5)(6)(7)(8)(9)(10)(11)(12)

PCFR-KIT4 = ALL ITEMS AS SHOWN

## Mounting Instruction

### PCFR MOUNTING INSTRUCTIONS

#### (A) ATTACH ADAPTER PLATE TO HEAD CASTING;

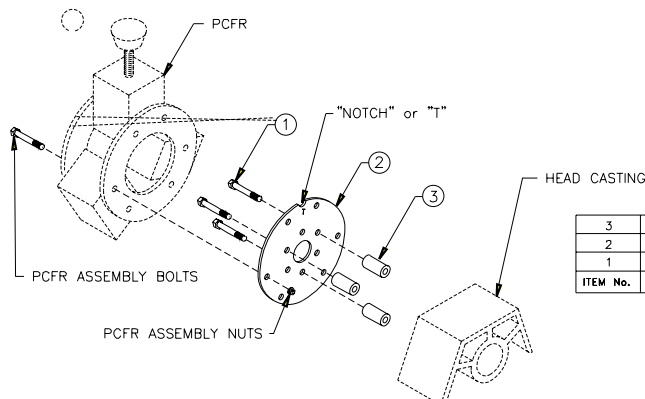
1. PLACE SPACERS [3] BETWEEN HEAD CASTING AND ADAPTER PLATE [2], AS SHOWN.
2. USE 5/16-18 x 2.000 HEX BOLTS [1] TO MOUNT ADAPTER PLATE [2] TO HEAD CASTING.

#### NOTE: (REFER TO DETAIL "A")

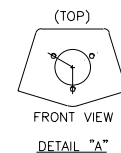
THE ADAPTER PLATE MUST BE IN THE TOP POSITION WHEN MOUNTING TO THE HEAD CASTING. THE "NOTCH" OR "T" STAMPED ON THE ADAPTER PLATE INDICATES THE TOP OF THE PLATE.

#### (B) ATTACH PCFR TO ADAPTER PLATE;

1. REMOVE PCFR ASSEMBLY NUTS FROM PCFR ASSEMBLY BOLTS. (DO NOT REMOVE BOLTS OR REAR DISC FROM PCFR.)
2. ALIGN PCFR ASSEMBLY BOLTS W/ CORRESPONDING ADAPTER PLATE HOLES.
3. REPLACE PCFR ASSEMBLY NUTS AND TIGHTEN.



NOTE HOLE LOCATIONS OF HEAD CASTING.



3	3	PCFR80B	SPACERS
2	1	PCFR80A	ADAPTER PLATE
1	3	HHCS11	5/16-18 x 2.000 BOLT
ITEM No.	QTY.	PART No.	DESCRIPTION