

DM138
For 1-1/4" to 3" Lines

The DM138 plumbing snake is a small machine that gets the job done. It handles pipes from 1-1/4" to 3" for residential, sinks, shower and bath tub drains.



Specifications:

- 1/4 HP motor
- 230 RPM

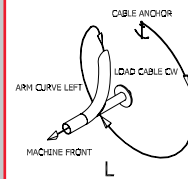
Features:

- Vertical or Horizontal Operation
- Ground Fault Circuit Interruptor
- Standard Safety Air Foot Pedal
- Available with 8" or 14" reels



Machine Specifications (estimated)

Length	
Standard Machine	20"
Width	
With 14" reel (standard)	14"
Height	
With 14" reel (standard)	15-1/4"
Weight	
Machine	22.5 lbs.
14PRK reel	7.75 lbs.
Arms	
38RAW-L	14" reel
25RA	8" reel

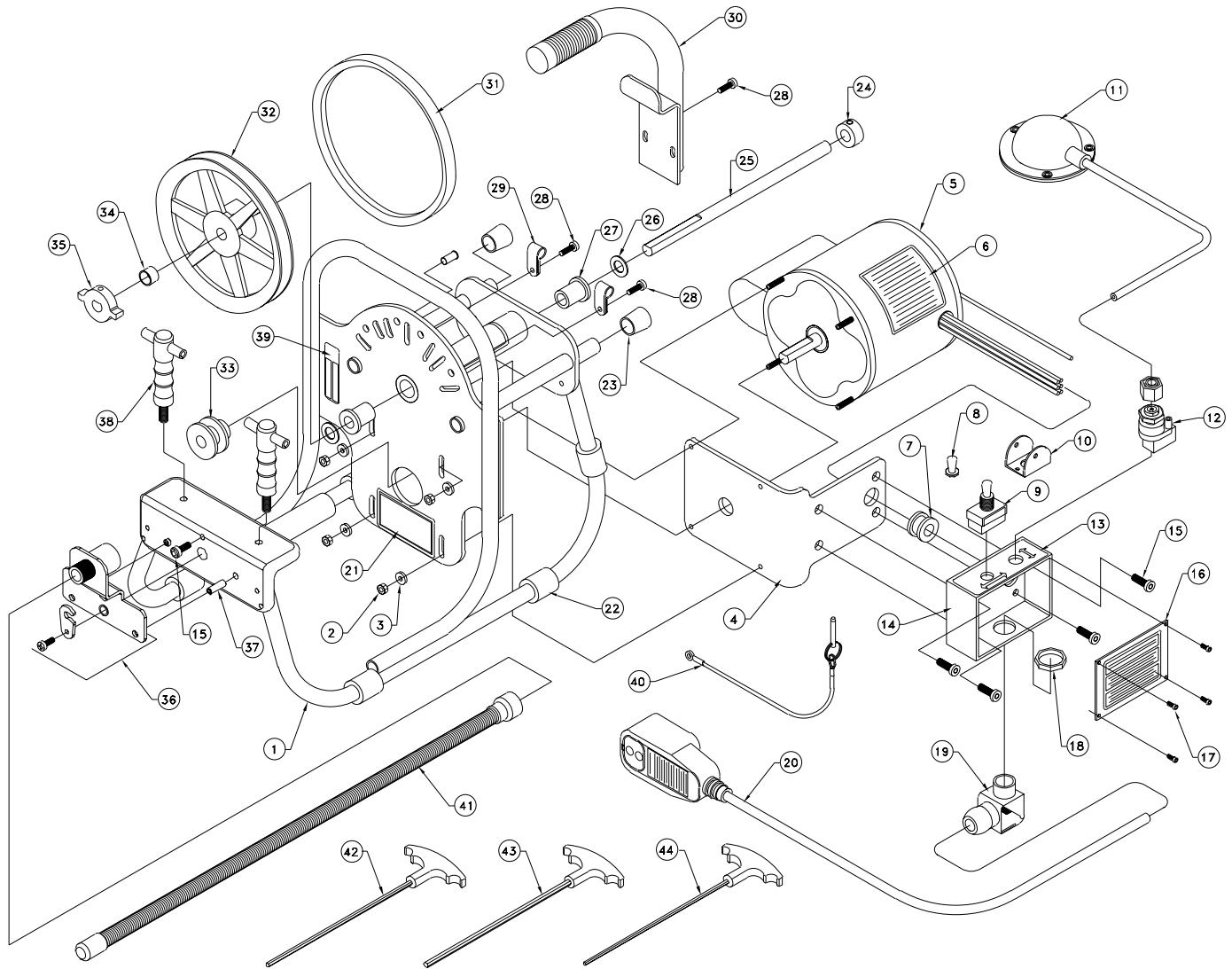


This is the standard arm that comes with this machine package. Opposite arms are available for the 14" wheel.

The DM138 plumbing snake is a continuously welded frame that holds up to the challenges tough drain cleaning. The heavy-duty front bearing mount adds to the stability of this plumbing snake. The DM138 sewer drain snake with a self-aligning head bearing ensures that the reel will stay in place when in operation. Reels change quickly. The DM138 plumbing snake operates with a guide tube to keep surfaces from scratching while you are running cable. This small pipe snake operates in an upright position to allow running cable easier. Non-marring rubber pads protect flooring in both horizontal and vertical positions.

DM138	
Item	Item Description
DM138A	1/4 HP motor at 230 RPM, air foot pedal, 14" enclosed polyethylene reel, 3/8" x 90' cable
DM138A1	1/4 HP motor at 230 RPM, air foot pedal, 8" enclosed polyethylene reel, 1/4" x 37' cable
DM138A2	1/4 HP motor at 230 RPM, air foot pedal, one 8" enclosed polyethylene reel, one 14" enclosed polyethylene reel, 3/8" x 90' and 1/4" x 37' cable
MACHINE ACCESSORIES / REPLACEMENT PARTS	
Item	Item Description
25061	Air Switch with Strain Relief Nut
25074	Air Foot Pedal (<i>rubber</i>) with 10' Tubing
25003	Forward/Reverse Switch
11040	Detachable Handle with Welded-on Bracket
25216	Guide Tube
11036	Guide Tube Bracket Assembly
8PRK	8" Enclosed Polyethylene Reel with Inner Reel and Head Bearing
14PRK	14" Enclosed Polyethylene Reel with Inner Reel and Head Bearing
14PRWLK	14" Enclosed Polyethylene Reel with Inner Reel and Head Bearing (<i>left arm</i>)
14PRWRK	14" Enclosed Polyethylene Reel with Inner Reel and Head Bearing (<i>right arm</i>)
780000	Mini Power Cable Feed and Return

DM138 Plumber Snake with air Foot Pedal



DM138 Plumber Snake



The entire line item in **bold** identifies the name of an entire assembly.
The “Z” shaped arrow identifies all the parts that make up that assembly.
You can purchase the entire assembly, or just the individual parts.

DM138 PARTS LIST			
Item#	Qty.	Part#	Description
1	1	D11016	Red Frame
2	4	HXNUT27	#8-32 Hex Nut with Lock Washer
3	4	WA41	#8 Flat Washer
4	1	11025	Electrical Mounting Plate
5	1	11005	1/4 HP Motor
6	1	25212	GFCI / Rotating Danger Decal
7	1	MM23	Black Rubber Grommet
8	1	ECT26	Rubber Switch Boot
9	1	25003	Forward / Reverse Switch
10	1	25015	Switch Guard
11	1	25074	Air Foot Pedal (rubber) with 10' tubing
12	1	25061	Air Switch with Strain Relief Nut
13	1	25069	Decal, Forward/Reverse with On/Off
14	1	11030	Electrical Housing
15	5	SHCS31	1/4"-20 x 3/4" Socket Head Cap Screw
16	1	11031	Electrical Cover with Decal
17	1	25211	Decal, Rotating Warning
17	4	SHCS39	#4-40 x 5/16" Socket Head Cap Screw
18	1	ELN1	Electrical Nut, 1/2" National Pipe Thread (NPT)
19	1	ECT34	1/2" Strain Relief, 90° Snap Elbow with Dome Nut
20	1	25166	GFCI Cord, 16/3 x 22"
21	2	25000	Decal, Machine Logo
22	6	MM19	Black Rubber Frame Pad
23	2	CPLUG4	Black Rubber Frame Cap
24	1	MM20	Shaft Collar with Set Screw
25	1	11020	Reel Shaft

DM138 PARTS LIST			
Item#	Qty.	Part#	Description
26	2	MB4	Reel Shaft Bushing
27	2	SB16	Reel Shaft Bearing
28	3	PHSC6	#10-32 x 5/8" Pan Head Machine Screw
29	2	CCL1	Black Cable Clamp
30	1	11040	Bolt-on Handle
31	1	11012C	Belt, 4L240 – 230 RPM
32	1	11012B	Sheave, 4L x 7.0" Outside Diameter – 230 RPM
33	1	11010A	Sheave, 4L x 1.5" Outside Diameter
34	1	11014	Drive Dog Spacer
35	1	11013	Drive Dog with Set Screw
36	1	11036	Guide Tube Bracket
37	1	PHSC6	#10-32 x 5/8" Pan Head Machine Screw
38	1	MM34	Swing "C" Washer
37	2	RLPIN7	1/4" x 5/8" Roll Pin
38	2	MM36	T- Bolt
39	1	SNTAG	Serial Number Tag
40	1	MM38	Detent Ring Pin with Lanyard Attached
41	1	25216	Guide Tube, 36"
42	1	HKEY11	5/32" x 9.0" T-Handle Hex Key
43	1	HKEY10	3/16" x 9.0" T-Handle Hex Key
44	1	HKEY9	1/8" x 9.0" T-Handle Hex Key