

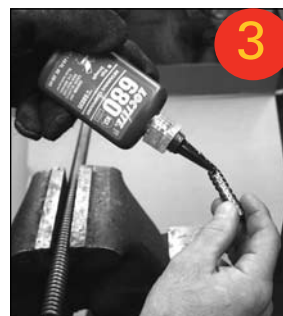
How to Splice DuraFlex® Cable



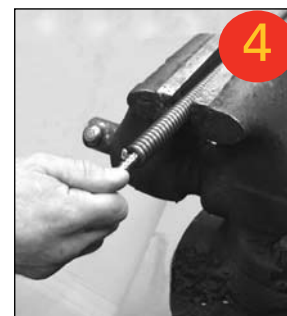
1. Cut a few inches off of each cable end and remove any burrs with a grinding disk or file.



2. Spray Loctite® Primer in and around the cable end and splice core to thoroughly remove grease and grime.



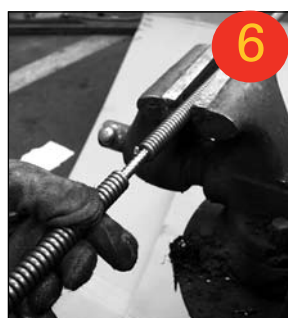
3. Apply Loctite® Retaining Compound to splice core.



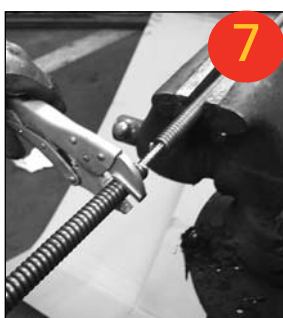
4. Insert splice core into cable one turn.



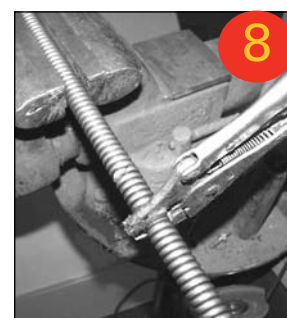
5. Apply Loctite® Retaining Compound to other end of splice core.



6. Align other piece of cable onto splice core.



7. Place vise grips on free cable end and turn counterclockwise.

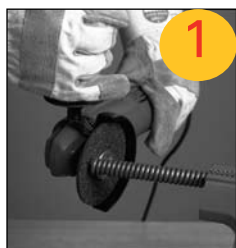


8. Continue turning and the cable ends will meet at the center of the splice core.

How to Bond End Fittings to DuraFlex® Cable

You can attach end fittings and splice cores to DuraFlex® cable using a chemical bonding process, which means you can make quick cable repairs on the job—without welding. With Loctite® Primer and Loctite® Retaining Compound, you can quickly create a dependable bond that is as strong as a conventional weld. Please note that these products are not the same thread-locking compounds available in hardware stores and plumbing-supply houses, they are heavy-duty, permanent-bonding compounds made especially for jobs such as bonding cable fittings.

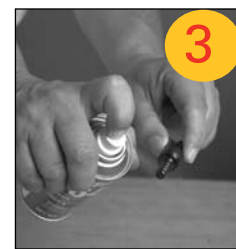
1. Cut the cable end and remove any burrs with a grinding disk or file.



2. Spray Loctite® Primer in and around the cable end to thoroughly remove grease and grime.



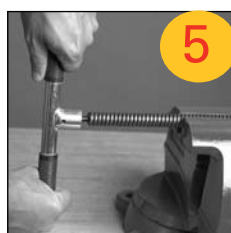
3. Spray Loctite® Primer on the end fitting to thoroughly remove grease and grime.



4. Apply Loctite® Retaining Compound to the end fitting.



5. Using (EW) Wrench, screw the fitting into the cable end until fitting is totally sealed.



6. The Retaining Compound will be fully bonded to the cable in just a few minutes.

