



- ▶ All cable is packaged and shipped to you in a unique carton that eliminates problems caused by banding and protects the cable during the shipping process. The cable loads easily into your machine - with fewer kinks, longer life, and better return on your investment.
- ▶ FREE FREIGHT on cable orders - other items in order excluded - with the purchase of \$2,500.00* or more in cable. (*Price subject to change without notice. No other discounts apply.)

- ▶ DuraFlex® Cable comes in a variety of flexible styles including: *Hollow Core, Loose Wound Hollow Core, Cable-In-Cable, Inner Core, Loose Wound Inner Core, Oil Tempered Hollow Core, and Oil Tempered Inner Core.*
- ▶ Our DuraFlex® *hollow core* cable is the favorite of most technicians. We manufacture it from a proprietary, hard-drawn, high-tensile, strength wire in a variety of diameters, lengths and flexible characteristics to fit every application.
- ▶ *Cable-in-Cable* is a unique item that provides the extra strength of a rod, yet still manages the flexibility to get around corners. It is manufactured by taking 7 sets of 7 strands of tough wire and bundling them together and then wrapping the bundles with our finest cable.
- ▶ The popularity of *inner core* cable is growing, especially in smaller cable sizes. Inner core cable contains a nylon string core of a slightly smaller diameter that floats inside the cable. The nylon is much lighter in weight than

competitors' wire cable inserts and is extremely flexible. As the cable begins to torque, it tightens down on the inner core and increases the stiffness of the cable. In addition to producing a solid rod-like performance, cable life is improved.

- ▶ *Oil tempered* cables are made from a stiff wire that was developed for the auto industry to be used in valve springs. The stiff wire makes the cable stronger and more rigid. The cables are used for long, straight runs where there are few traps to negotiate.
- ▶ QUANTITY DISCOUNTS ON CABLE. Purchase 10-19 boxes of the exact same cable and get a 5% discount. Purchase 20-39 boxes of the exact same cable and get a 7% discount. Purchase 40 or more boxes of the exact same cable and get a 10% discount. No other discounts apply.



DuraFlex® Cable Put to the Test to Ensure Quality

Testing

At Duracable®, we thoroughly test our cables to make sure our quality is the highest on the market. Every coil of wire that comes into our warehouse is tested and results are documented. If any of the tests fail, that coil of wire is discarded and not used in our cables. We test more than 27,000 pieces of cable per year, which equals more than 15.4 million feet of wire. Only the best can be a DuraFlex® cable.

Inside/Outside Diameter Test

Our first tests check the outside and inside diameter of the cable. The gauge used in the tests tells us the diameter of the cable to make sure it meets our specifications.

Drop Test

The drop test is next. It checks to make sure the stiffness of the cable is adequate because we do not want to send out cable that is too limber. A cable that is "x" diameter and "x" inches long can only "drop" so far or it fails the test and is discarded. If the cable passes the drop test, it moves on to our twist test.

Twist Test

In our twist test, one end of the cable is restrained to keep it in place while the other end is twisted with our machines. We set a gauge to a specific PSI and the motor then turns the cable until it breaks. The gauge will tell us how many foot-pounds of torque the cable can take before it breaks.

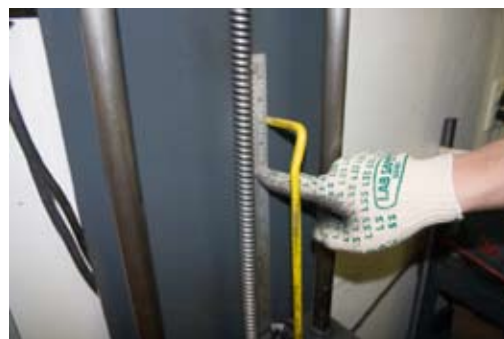
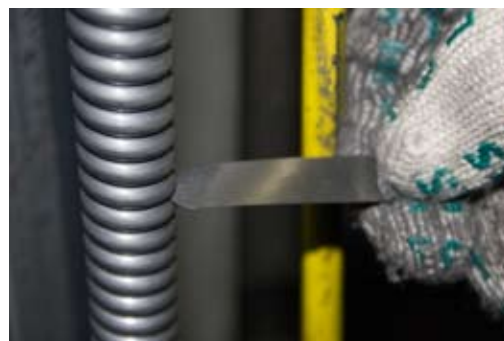
Stretch Test

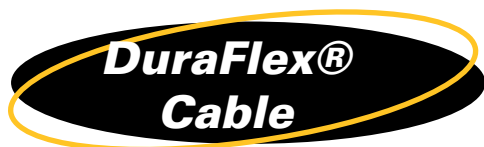
Our final test is the stretch test. The test cable is mounted onto our stretch indicator and our pressure gauge is set. The distance between the coils is less than 1/3 the thickness of a human hair. We stretch the cable until a feeler gauge can be inserted between the links on the cable. The pounds of pressure and distance are recorded for cable consistency.

The cable is then stretched and we check to see how many pounds of pressure it took to make the cable stretch so far. We then bring the cable back to the point where there is no pressure on the coils and we measure how much the cable actually stretched.

Final Approval

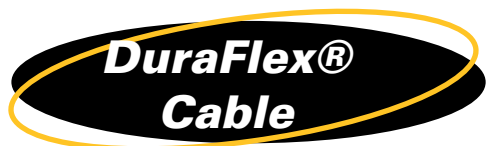
If the cable does not pass any of the tests described above, it is discarded and will not be sold. The entire shipment of wire is returned to our supplier. If the cable passes all of the tests, it is boxed and tagged for use.





* Maximum length of cable is not always the recommended length. Custom lengths are available.

CABLE*							FLEXIBLE LEADER (Loose Wound & Hollow)			MACHINE
Part #	Size	Length	Type	Weight (per foot)	Line Size	Uses	Part #	Dimensions	Weight	Model Used
CH25-037 CH25-050 CH25-075 CH25-100	1/4"	37' 50' 75' 100'	Hollow Core	0.12 lbs.	1" - 2"	Household clogs, sinks, bathtubs, and other minor jobs.	None	None	None	MiniMax® Marquise The Baron The Knight
CI25-037 CI25-050 CI25-075 CI25-100	1/4"	37' 50' 75' 100'	Inner Core	0.13 lbs.	1" - 2"	Household clogs, sinks, bathtubs, and other minor jobs.	None	None	None	MiniMax® Marquise The Baron The Knight
CH31-037 CH31-050 CH31-075 CH31-100	5/16"	37' 50' 75' 100'	Hollow Core	0.20 lbs.	1" - 2"	Household clogs, sinks, bathtubs, and other minor jobs.	None	None	None	MiniMax® Marquise The Baron The Knight
CI31-037 CI31-050 CI31-075 CI31-100	5/16"	37' 50' 75' 100'	Inner Core	0.21 lbs.	1" - 2"	Household clogs, sinks, bathtubs, and other minor jobs.	None	None	None	MiniMax® Marquise The Baron The Knight
CH38-060 CH38-075 CH38-090 CH38-100	3/8"	60' 75' 90' 100'	Hollow Core	0.24 lbs.	2" - 3"	Bathtubs, sinks, kitchen traps, and washing machine lines.	None	None	None	MiniMax® Marquise The Baron The Knight
CI38-060 CI38-075 CI38-090 CI38-100	3/8"	60' 75' 90' 100'	Inner Core	0.25 lbs.	2" - 3"	Bathtubs, sinks, kitchen traps, and washing machine lines.	None	None	None	MiniMax® Marquise The Baron The Knight
CH50-060 CH50-075 CH50-090 CH50-100	1/2"	60' 75' 90' 100'	Hollow Core	0.44 lbs.	3" - 4"	Any line smaller than 4" and can be used with adapters with regular or heavy-duty blades.	None	None	None	Marquise The Baron The Knight The King
CI50-060 CI50-075 CI50-090 CI50-100	1/2"	60' 75' 90' 100'	Inner Core	0.45 lbs.	3" - 4"	Any line smaller than 4" and can be used with adapters with regular or heavy-duty blades.	None	None	None	Marquise The Baron The Knight The King
CH62-080 CH62-100 CH62-120	5/8"	80' 100' 120'	Hollow Core	0.70 lbs.	3" - 6"	Perfect when you need a cable that can handle both small and large jobs in lines up to 6".	FL62-002	5/8" x 2'	1.4 lbs.	Marquise The Baron The Knight The King
CI62-080 CI62-100 CI62-120	5/8"	80' 100' 120'	Inner Core	0.71 lbs.	3" - 6"	Perfect when you need a cable that can handle both small and large jobs in lines up to 6".	FL62-002	5/8" x 2'	1.4 lbs.	Marquise The Baron The Knight The King
CH69-080 CH69-100 CH69-110 CH69-120 CH69-130 CH69-150	11/16"	80' 100' 110' 120' 130' 150'	Hollow Core	0.76 lbs.	4" - 8"	Excellent flexibility for negotiating Ts, angles and hard to reach spots.	None	None	None	Marquise The Baron The Knight The King



* Maximum length of cable is not always the recommended length. Custom lengths are available.

CABLE*							FLEXIBLE LEADER (Loose Wound & Hollow)			MACHINE
Part #	Size	Length	Type	Weight (per foot)	Line Size	Uses	Part #	Dimensions	Weight	Model Used
OH69-080 OH69-100 OH69-110 OH69-120 OH69-130 OH69-150	11/16"	80' 100' 110' 120' 130' 150'	Oil Temp. Hollow Core	0.77 lbs.	4" - 8"	Excellent flexibility for negotiating Ts, angles and hard to reach spots.	None	None	None	Marquise The Baron The Knight The King
CI69-080 CI69-100 CI69-110 CI69-120 CI69-130 CI69-150	11/16"	80' 100' 110' 120' 130' 150'	Inner Core	0.77 lbs.	4" - 8"	Excellent flexibility for negotiating Ts, angles and hard to reach spots.	None	None	None	Marquise The Baron The Knight The King
CC69-050 CC69-100	11/16"	50' 100'	Cable - in - Cable	0.98 lbs.	4" - 8"	Cable with wire inner core.	None	None	None	The King
CH75-050 CH75-080 CH75-100 CH75-110 CH75-120 CH75-130 CH75-140 CH75-150	3/4"	50' 80' 100' 110' 120' 130' 140' 150'	Hollow Core	0.94 lbs.	4" - 10"	Ideal for those heavy jobs where you need a stiffer cable. Great for ripping up roots in lines up to 10".	FL75-002	3/4" x 2'	1.9 lbs.	The Knight The King
OH75-050 OH75-080 OH75-100 OH75-110 OH75-120 OH75-130 OH75-140 OH75-150	3/4"	50' 80' 100' 110' 120' 130' 140' 150'	Oil Temp. Hollow Core	0.95 lbs.	4" - 10"	Ideal for those heavy jobs where you need a stiffer cable. Great for ripping up roots in lines up to 10".	FL75-002	3/4" x 2'	1.9 lbs.	The Knight The King
CI75-050 CI75-080 CI75-100 CI75-110 CI75-120 CI75-130 CI75-140 CI75-150	3/4"	50' 80' 100' 110' 120' 130' 140' 150'	Inner Core	0.95 lbs.	4" - 10"	Ideal for those heavy jobs where you need a stiffer cable. Great for ripping up roots in lines up to 10".	FL75-002	3/4" x 2'	1.9 lbs.	The Knight The King
CC75-050 CC75-100	3/4"	50' 100'	Cable - in - Cable	1.1 lbs.	4" - 8"	Cable with wire inner core.	None	None	None	The King
CH75-100LW	3/4"	100'	Loose Wound Hollow Core	0.94 lbs.	4" - 10"	Heavy jobs where you need a stiffer cable.	FL75-002	3/4" x 2'	1.9 lbs.	The Knight The King
CI75-100LW	3/4"	100'	Loose Wound Inner Core	0.94 lbs.	4" - 10"	Heavy jobs where you need a stiffer cable.	FL75-002	3/4" x 2'	1.9 lbs.	The Knight The King

Blade Kits

BLADE KITS			
Kit Part #	Description	Included Parts #	Description of included Parts (Parts may not be exchanged)
DKIT1	Kit for The Marquise (JMaxx®) and The Baron (DM10)	D3L HKEY1 HXNUT7 NF4 WA22 50010 50013 50015	Reel Attachment for 16" and 19" Open Metal Spoke Reels 5/32" Short Arm Key 1/4"-28 Hex Nut 11" Long, Tapered End Grease Cutter 1/4" Lock Washer 1" Single Thick Ground Outside Blade 2" Round Thick Ground Outside Blade 3" Thick Pear Ground Outside Blade
DKIT2	Kit for The King (DM55) and The Knight (DM30)	CR C1 C1J D3R D3RJ HKEY1 SHCS1 75007 75014 75019	Hook-type Retriever, fits 3/8" threads One Hole Female Chuck Slip Joint Chuck with female end, fits 3/8" threads Floating Ring Attachment (male end) Floating Ring Attachment (bolt attachment) 5/32" Short Arm Hex Key #10-24 x 3/8" Socket Head Cap Screw Full Dog Point 2" Narrow Ground Outside Blade 3" Narrow Round Saw Blade 4" Narrow Round Saw Blade

Tail Pieces

TAIL PIECES	
Part #	Description
CH75-010LW	3/4" Loose Wound 10' Tail Piece
DCH75-010LW	3/4" Loose Wound 10' Tail Piece with your choice of End Fitting
DCH69-010LW	11/16" Loose Wound 10' Tail Piece with your choice of End Fitting
CH62-010LW	5/8" Loose Wound 10' Tail Piece
DCH62-010LW	5/8" Loose Wound 10' Tail Piece with your choice of End Fitting



Pictured above is a picture of a CH75-010LW tail piece and A2JK end fitting attached to the inside of a reel.

Leaders

LEADERS	
Part #	Description
FL62-002	5/8" x 2' Flexible Leader
DFL62-002	5/8" x 2' Flexible Leader with your choice of End Fitting
FL75-002	3/4" x 2' Flexible Leader
DFL75-002	3/4" x 2' Flexible Leader with your choice of End Fitting