

See Everything.

# Ratech

Small Pipe Systems

## PMV<sup>©</sup>

'PLUMBER'S MATE'

COLOR / BLACK & WHITE



Professionals Call it  
"The Plumber's Mate"

**Independent Monitor  
Independent VCR or  
DVD Recorder**

*"This rugged  
transportable all-in-  
one system is perfect  
for 2 to 10-inch lines."*

Now Available With



The Ratech PMV model has quickly become one of the most accepted systems in the market today. The design features a **9" industrial COLOR display & separate built-in 4-Head VCR or DVD Recorder** making future repair or replacement a snap. The monitor is mounted at a 20 degree, easy viewing angle while the 4-head VCR includes a "jitter free" freeze frame so the operator can precisely analyze the recorded image.

Two models are available - Model **PMV-C** featuring a full spectrum miniature color camera head measuring only 1.375" diameter coupled with a highly sensitive CCD chip and 16 high intensity LED lights.

Model **PMV-BW** is a high resolution black and white system, color ready, that features a camera head (0.5 lux) capable of providing excellent black and white

pictures in low light conditions. With it's built in hi-intensity LED lighting, the camera can easily be used in 2" to 10" lines and sometimes larger depending on pipe conditions.

Both systems, color and black & white, are supplied with a hard cover case CCU (camera control unit), case mounted wheels, telescopic handle and tilt stand. The front panel includes system controls for the camera, lights, VCR or DVD Recorder and main power. A removable front cover includes a keyboard, power cords and accessories such as camera sleeves/skids and camera removal tool.

The cable reel is supplied standard with 200' of Gel Rod push cable (other lengths available) on a lightweight yet rugged steel frame featuring a noise-free slip ring assembly.

## COLOR INSPECTION CAMERA



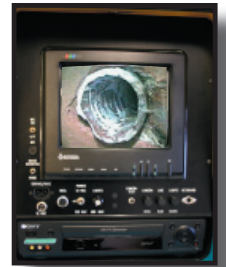
optional self leveling

- Compact camera design - (1.375"D x 1.85"L)
- Inspects from 2 - 10 inch pipes
- 512Hz In-line transmitter
- Shock and water resistant encapsulated high resolution low lux camera module
- High intensity LED lighting with polycarbonate cover
- Scratch resistant high impact sapphire lens viewing window
- Durable stainless steel housing
- Includes 2" sleeve and 3" finned skid
- Heavy duty flexible spring assembly

## MONITOR / CAMERA CONTROL UNIT



- Independent 9" color Hi-Resolution monitor (mounted for easy repair or replacement)
- Independent 4-Head VCR or DVD Recorder (mounted for easy repair or replacement)
- On-screen counter with time, date and keyboard/screenwriter
- Condenser microphone
- Lights: variable intensity
- Camera test socket
- Camera input terminal
- Hard cover carrying case with tilt stand and telescopic handle
- Power: 110-130 VAC, 60 Hz / 12 VDC
- Size: 16.0"W x 19.0"H x 20.0"D
- Weight 45 lbs



## PUSH CABLE

- Combination push rod video cable, 0.475"D with low friction polypropylene jacket
- Water-proof dual jacket Gel Rod cable
- 200 feet (60 meters) standard length included (lengths up to 400' available)

## COILER



- Overall size: 32"H x 14"W x 27"D
- Slip-ring: sealed, continuous contact, maintenance free
- Weight: 45 lbs (w/ 200 ft. of cable) - Balance optimized
- Tough, durable powder coat paint finish



### Optional Equipment

- Self Leveling Color Camera
- 512Hz Receiver with Depth Readout (also available in Deluxe version)
- Roller Skid for 6" 8" and 10" Straight Runs

### Warranty

One year parts and labor against defects in manufacturing. Unit or system must be returned to factory for warranty repairs. Damage caused by user or carrier will not be covered under Ratech's standard warranty

**RJM Company**  
**360-828-5732**  
[www.rjmcompany.com](http://www.rjmcompany.com)  
[brianmoss@rjmcompany.com](mailto:brianmoss@rjmcompany.com)

