

# RJM 2018 Equipment Catalog



Products	Page
Utility Locators:	2, 3, 4
Plastic Pipe Locators:	5
Water Leak Detectors:	6, 7
Pipe Cameras:	8, 9, 10, 11
Sewer Cable Machines:	12, 13
Sewer Jetters:	14
Pipe Boring / Bursting:	15
Pipe Fusion Machines:	15
Utility Markers:	16
Odor Control Biofilters:	16
Metal Detectors:	16

## Radiodetection RD8100 Precision Locator: All R7100 features plus below:

**Remote Control of Transmitter:** Change frequency and output from **1400 feet**.

**Current Direction:** New 4K CD frequency works in more places and identifies when locating the same utility that the transmitter is connected to with better accuracy than current measurement.

**Internal GPS and / or External GPS**

**5 Individual Power Harmonics:** Identify separate cables better (PDL, PL)

**New 4 Khz Frequency**

**Choose the Best Frequency for the Application:** 18 locator frequencies (PDL), 4 sonde frequencies, 5 passive frequencies (PDL)

**Verify Accuracy:** Simultaneously compare the peak and true null signals to determine accuracy instead of assuming.

**StrikeAlert:** Warns of nearby power cables

**Simultaneous power and radio signal detection**

**Cable Fault Location:** Follow the arrows to the cable ground faults.

**30% Stronger Signal:** Single peak antenna for stronger signal

Null antenna: Simple to pinpoint even at deep depths. Fast and easy with different tones on right and left. Indicates accuracy when compared to peak.

Cable Fault Locating: PDL



**Radiodetection**



## Radiodetection Locator Accessories:

Li-ion batteries for transmitters and receivers with quick change battery doors

Ground fault locating A-frame

Remote control transmitter switch directs signal to 4 different utilities

3 Cases: Soft, light hard case, heavy duty hard case

Live cable connector applies signal to live power cables for better accuracy

Induction clamps: 2", 4", 5", 8.5", CD transmitter, receiver

Stethoscope antennas: CD, Small, Large, High Gain

Submersible antenna



**Radiodetection**



Live Cable Connector

### Sondes:

Accurately locate pipes and conduits to 50 feet depth

9 choices: 0.25", 0.35", 0.5", 0.7", 0.9", 1.5", 2.5" dia.

3 frequencies: 512 hz, 8 Khz, 33 Khz



Transmitter Switch



A-frame



Sondes



Induction Clamps



Li-ion Battery



Stethoscope antennas



Cases

## Radiodetection RD7100: DL, PL, TL



**New Guidance Mode:** Intelligently combining 5 signals for the easiest, fastest and most accuracy

**Precision Antennas:** Ferrite core antennas **diamond ground** to 0.02", aligned to **0.1 degrees** and secured for long term precision.

**Withstands water jets** and one meter drop to concrete, IP65

**High Sensitivity Power Frequencies:** Detects 16 power frequencies at once for extremely sensitive detection.

**Verify Accuracy:** Simultaneously compare the peak and true null antennas to determine accuracy without assuming.

**CPS frequency:** Finds cathodically protected water and gas pipes (DL, PDL)

**Li-ion battery:** 35 hour life, lighter, better low temperature life, no battery corrosion or connection problems, greener choice (optional)

**Live power cable warning**

**Frequency on & off selection** for faster and simpler use

**3 Year Warranty**

**Peak Mode + Guidance Arrows:** Combines the two most accurate signals in an easy to follow display

**Displays Utility Direction:** Large center line stays parallel to the utility

**Free onsite firmware updates**

**On-site training included with all locators**

**Balanced:** Hangs vertically from the handle improving accuracy and preventing wrist strain.

**Utility Identification:** **Automatically** displays signal strength to identify the utility

**Right & Left Arrows**

**Automatic TruDepth:** **Automatically** displays the depth **only** when aligned and near the pipe preventing display of incorrect depths.

**Onsite Calibration Check:** Check & document calibration from your computer.

**Dynamic Overload Protection:** Prevents signal overload in areas with strong signals.

**Cable Fault Location:** Forward & reverse arrows to the cable ground fault from all directions (PL, TL, PDL)

**Enhanced Checking:** Comprehensive self test with locate circuit test

**Usage logging:** Automatically stores locate parameters every second for documentation



Freq.	DL	PL	TL
Active	.512, 8, 33, 65	.512, 8, 33, 65	.512, 640, 8, 33, 65, 131, 200
Sonde	.512, 8, 33	33	.512, 8, 33
Passive	P, R, CPS	P, R	P, R

## Radiodetection Marker Locators All RD7000 and RD8000 features plus:



**Locate the utility and marker simultaneously**

**Automatically selects last marker frequency when antenna is flipped down**

**20 feet maximum EMS marker depth, 4.9 feet marker ball maximum depth**

**Guidance mode:** Blank area in display bar shows the utility position, large centered line rotates shows utility pipe direction, distance proportional arrows guide to the utility, different left and right tones, auto depth, auto signal strength

**GPS built-in** with auto data logging and external **GPS** compatible (8000)

**Li-ion battery standard**





## Radiodetection Transmitters Tx-5, Tx-10



**Withstands water jets** - IP65  
3 year warranty with registration  
Remotely control transmitter from 1400 feet  
Accessory storage tray in base  
**Current Direction** accurately identifies the same utility (Tx-10)  
Select from 32 direct, 8 induction, 4 CD identification frequencies  
Large, high contrast, backlight LCD display with clear information  
Rechargeable **Li-ion battery with quick change battery door** optional  
Signal strength displayed and tone  
Max 90 volt output, 10 watts direct and 1 watt induction for stronger signals.

## Radiodetection RD5000 — One Button Operation

Center gap in the display bar.  
Left > < right arrows guide to center  
**Shows Pipe Direction:** Large line stays parallel to the pipe  
**Dual batteries:** Transmitter includes both rechargeable and D-cells  
**Easy Guide Tones:** Continuous left, pulsing right, no tone center  
**Value Priced:** Rechargeable batteries for transmitter and receiver included for less than the leading competition for lower price



## Radiodetection CAT4: Simple and Low Cost

**Scan [power + radio + transmitter] frequencies together one step**  
Simple operation: Turns on automatically when picked up  
Swing warning available  
Value priced  
Automatic GPS and automatic usage logging available (optional)  
Frequencies: Power, radio, CPS, sondes, 3 frequencies  
Strike Alert: warns when near live power line  
Dual frequency signal boost  
Detachable loud speaker for noisy environments



## TDR Cable Fault Locator Riser Bond 3300

Stores screen cable data  
12 miles range  
Intermittent fault detection  
Noise filters with 8 settings  
0.01% reading, within 0.5 ft.  
Find shorts, opens, water damage, crimps and more in ethernet, CATV, twisted pair phone, low voltage cables



## TDR Cable Fault Locator Lexxi 1660

1% accuracy & 1% resolution  
19,000' range  
Economical  
Find shorts, opens, water damage, crimps and more in ethernet, CATV, twisted pair phone, low voltage cables



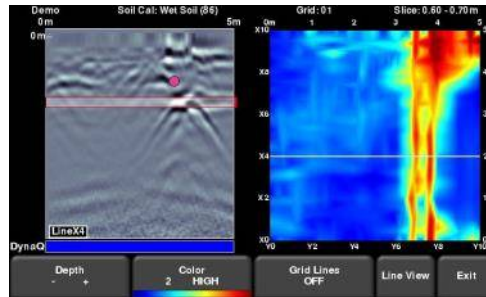
# Non-metallic Pipe Locators

## Ground Penetrating Radar - RD1100 & RD1500

- 3 frequency ranges
- GPS & Wi-Fi
- On-site map view
- Depth sections
- 3D data export
- Color touch screen
- Easy operation
- Low price
- Lightweight carbon fiber frame
- On screen utility markers



Radiodetection



## Plastic Pipe Locators

Create water pulse sounds in the pipe with the Sewerin Stopper, Radiodetection Electronic Transonde or RD500. Adjust both the pulse intensity and rate with Stopper. The Electronic Transonde controls the pulses at fixed intensity and rate, but is more economical. The RD500 offers the lowest cost water pulse generator and has three different versions for small, medium and large water pipes. The Sewerin Striker easily straps around the pipe to create pipe sounds. The Generator controls and powers the Stopper and / or Striker. The A200, AC200, M300D water leak detectors include listening modes specifically for locating pipes acoustically.



Electronic Transonde



RD500



Stopper



Stopper & Striker Controller



Striker

## Jameson Locatable Rodders

Locate conduits, storm drains, live water mains and water services, sewer mains  
Push sondes, locate entire length, pull cable  
Fiberglass rod with copper wire center  
Jameson quality since 1954



Dia.	Lengths	Conduit
1/8"	100' - 200'	1/2" - 1"
3/16"	100' - 300'	1/2" - 4"
5/16"	300' - 800'	2" - 4"
7/16"	400' - 1500'	> 4"

## Sensit Plastic Pipe Locator

- Works in high conductivity soils like clay that limit ground penetrating radar depth
- No connection to the pipe needed
- Easy guided operation
- Finds plastic water services, sewer laterals, septic tanks, gas pipes ...
- Sends and receives sound waves to determine pipe locations



## AML Pro and AML+ Pipe Locator

- Finds plastic pipes and other buried objects with edges by sensing the differences in density.
- No connection to the pipe needed
- Rechargeable Li-ion battery, backlight display, GPS, digital leveling, digital targeting,
- 3 year warranty



## Sewerin AC200 Water Leak Correlators

**Correlator + Leak Detector + Plastic Pipe Locator + Leak Survey**

**Wireless microphones & wireless headphones**

**GPS transmitters**

**Replays & displays 7 listening points**

Correlation quality indicator

Removes background noises from replay

Automatic & precision set noise filters

Submersible microphones & controller

Simple bright color touch screen

Extreme sound level protection

Thumb sensor non-mechanical mute

Charges all from the outside the case

Two year warranty



**C200 Water Leak Correlator** = AC200 without the leak detector microphones

**AC200 = A200 Leak detector + C200 correlator**

## Water Leak Loggers: Sewerin Sepem 115

**Detect leaks up to 1600 feet distance, highest sensitivity loggers**

**Lowest cost** to survey water systems

Automatically listens when other noises are minimum and indicates leaks

Easy data collection with dedicated master logger



## Acoustic Leak Detector / Tracer Gas Detector / Plastic Pipe Locator M300D

Identifies match to leak sounds

Touch screen with bright color display

Precise noise filters

Extreme sound blocker

7 listen point history display

Withstands water spray

2-year warranty



## Tracer Gas Detection Advantages:

1. No noise interference
2. Finds deeper and smaller leaks
3. Easier than listening

## MGD2002 Helium & Hydrogen Detector

Finds helium or hydrogen

Displays concentrations

25 ppm helium minimum.

Light weight telescoping ground probe



## Sewerin Variotec VT460 Gas Detector

Measures hydrogen of 0.1 ppm

Wheeled probe, short probe, long probe

Easy to read display in sunlight

Simple operation



## Ferret Water Leak Finder

Insert into water service tubing until it automatically stops at the leak, locate the integral sonde with a locator.

3/8" - 1 3/4" I.D. pipes, 165' pipe length

Not affected by noise, easier than listening

Find leaks that can be heard



## PipeMic Water Leak Finder

Inserts a microphone and sonde into live water lines to hear the leak from inside the pipe, then locate position with a locator.

11.5' max. depth, 980' max. distance

More accurate pinpointing plus depth

Find leaks that can't be heard from above





# Sewerin Water Leak Detectors

## Sewerin A200 Water Leak Detector Leak Detector + Plastic Pipe Locator + Survey Tool

**Instant playback of last 7 points** for comparison of leak sounds without delay between listening points

**Wireless microphone & headphones**

**Filters frequency differences to remove noises**

**Color touch screen** with easy controls

Submersible wireless microphones

Automatic background noise filters

Unexpected extreme sound limiter with 5 levels

**Thumb sensing mute switch with no moving parts**

Sewerin's best leak detector, the world's leading leak detector manufacturer.



## Sewerin A50 Water Leak Detector

**Wireless** headphones or wired headphones

Background noise filters, 6 lower & 6 upper

Wind protected microphones

Weather proof, rechargeable batteries

Displays current & last 2 reading levels

Extreme sound protection with 3 levels



## Sewerin T10 Water Leak & Survey Tool

**Wireless** or wired headphones

Thumb sensor mute switch eliminates switch wear

8 background noise filters

Maximum noise limiter

Wind noise shields, rubber or foam



## Sewerin Stethophon Leak Detector

**Wireless** or wired headphones

Displays current & **previous** readings

**8 or 5 filter ranges**, max noise limiter

Simple operation & compact

46" rod & second microphone

Built in and separate microphones

Value priced



## Pearpoint Push Cameras

### Controller withstands water spray

1-touch video and photo

Records on USB memory

Cameras: 1", 1.23" self leveling, 2" self leveling

Roller guides prevent frame and pushrod wear

**Digital zoom, pan, rotation**

**Adjustable focus**

**All day internal Li-ion battery**

Lightweight controller, 12 lbs.

Protective glass screen

Coiled reel to controller cord stays off the ground to prevent tripping and cord damage

Time, date and distance counter with calibration

**500' extra stiff pushrod for longer distances and lower prices than crawler cameras**

512 hz sonde for locating position and depth

PEARPOINT



**Weather Proof    Intrinsically Safe    Explosion Proof**

## Pearpoint P350 Mainline Cameras

Crawlers: P356: 8" - 36" pipes, P354: 6" - 18" pipes

Cameras: Pan & tilt **10x optical zoom**, pan & tilt, fixed

Elevators: powered, manual, fixed

Reels: Powered Smart reel controls crawler and reel together to **prevent cable tangling** and require **less operators**, manual reel with lower cost

Laser Profiling: Inspects deformations, internal diameter and flow capacity

Camera Controls: Game pad, pendant control, joystick

P350 controller fits mainline and P340 push camera reels





## Magnum M12

**Digital zoom & pan**

**12" daylight viewable display**

**1-touch USB recording**

Counter with 6 screen positions

Titles, Voice recording

**Li-ion Battery**

Reel mounting

Easy operation

512 hz locating sonde

**Weatherproof** option

Reels: 25.5", 18", 16.5" dia.



## Magnum M7

2 hour Li-ion battery

USB recording

Wi-Fi

512 hz sonde

On-screen counter

On-screen text

Adjustable lights

Options:

100', 200', 3/8", 0.4"

Self-leveling camera

7.4" display & acrylic shield



## Portable

Wi-Fi phone / tablet recording

Lightweight: 29 lbs

125' pushrod

Removable aluminum controller

Li-ion battery

Battery level & alarm

On screen counter

7.4" display

Reel brake



## Wi-Fi 7200

Tough Aluminum Controller

On screen footage counter

512 hz sonde

Li-ion battery back

Adjustable camera lights

Record video & photos

Tablet charge connection

Reel mounting bracket

Protected keyboard



## Optimum Laptop Ready Camera

Laptop ready reel and camera

Machined aluminum control center

Battery pack

On screen footage counter

512 hz sonde transmitter

1.68" or 1.4" self leveling camera

200' of 1/2" or 0.4" dia. pushrod



## Sonic Plus

Wi-Fi

Distance counter

App with virtual keyboard

7.5" Display

Rugged

Economical quality

512 hz sonde



Hathorn Cameras	Dia.	Smallest 90 Bend	Largest Pipe Lighted Well	Material	Pushrod Diameter	Self Leveling
Micro	7/8"	1 1/2"	1 1/2"	SS	3/8"	No
Drain Scope	1.23"	1 1/2"	4"	SS	3/8"	No
Mini	1.23"	2"	6"	SS	0.4"	Optional
Mid-size	1.4"	3"	8"	SS	1/2"	Self leveling only
Standard	1.68"	3"	8"	SS Aluminum	1/2"	Optional

## Elite SD

10.4" LCD  
SD card recording  
Controller only 10 lbs.  
Keyboard for descriptions  
**Gel filled pushrod**  
Distance counter, date, time  
Voice recording  
**Camera test port**  
512 hz sonde

## Options

USB & Hard-drive recording  
Self leveling color camera  
Extra stiff pushrod  
Internal battery  
**USB recording**  
**WiFi**  
Locally serviced  
1 3/8" fixed color camera 3" - 8" pipes  
1 3/8" **self leveling color**: 3" - 8" pipes  
3/4" color camera: 1.5" - 4" pipes  
Any length pushrod up to **500'**

**Ratech**



Tablet



Laptop



MiniPeek LG



MiniPeek



Skids



Pan & Tilt Push Camera



Jetcam



Torpedo



Mainlines



## Wohler 200 250 350 Pipe Cameras

**Pan & tilt 1 1/2" and / or 1" fixed camera**  
**Top and bottom of the pipe** are indicated on screen  
**Angle of slope displayed**  
 SD card recording (except VIS-200)  
 7" pivoting & detachable super bright LCD with 6.5 feet cable  
 Distance counter, RCA video output, locating sonde  
 Home button returns pan & tilt camera to straight forward  
 Simple operation  
 Compact case: 6.9" x 17" x 20", 18 lbs.  
 100 feet push rod cable  
 Quick change rechargeable 1.5 hour batteries



## Wohler 700 with Pan & Tilt Camera

**HD video 1280 x 720**  
**Pan & tilt camera, 1.5" dia.** with home key  
**Live video to smart devices**  
**SD and USB** recording of video and photos  
**Focus** with touch screen or joystick  
 Compact case is only 7" x 18" x 20", 22 lbs  
 Locating sonde with selectable frequencies  
 On screen text, voice recording, distance, camera angle & position  
 Removable sunshade  
 4 hour Li-ion battery  
 2" to 8" pipes, 100 ft pushrod



## IV2 Modular Sewer Camera

**Tablet:** 10.1" sunlightreadable touch screen, text, counter, USB rec, photo, Insightvision App, 18V Li-ion included  
**7" View:** SD rec., 1-touch USB rec., remote, external battery available  
**Laptop Ready:** Insightvision App, counter, text, one touch photo, USB connection, external battery available  
 Rugged cases  
**Made in USA**

### Reels:

Standard: 0.475" x 200', 300', 400' premium pushrod  
 Micro: 0.36" x 150' premium pushrod

### Cameras:

1.2" dia. self leveling, 12 LED's, 512 hz sonde  
 0.85" color camera, 12 LED's, 2" P-traps, 512 hz sonde



## Opticam Value priced

10.4" LCD display  
 1-touch record USB recording  
 Rugged case  
 1.3" self leveling color camera, 480 x 720 resolution: 3" - 12" pipes  
 24-48 hour camera head service  
**Made in USA**  
 200', 300', 400' pushrod  
 10" diameter wheels, 512 hz sonde,

INSIGHT  
VISION



# Gorlitz Cable Machines

Quality manufactured in California since 1980 with a value price. Please call for prices and assistance for machines, cables, ends, chucks, blades and accessories.



## GO 15



1/4"

## GO 31



5/16"

## GO 250 /380



1/4", 3/8"

## GO 50PE



3/8", 1/2"

3/8", 1/2", 5/8"

11/16", 3/4"

11/16", 3/4"



## GO 62



1/2 HP

## GO 68PE



3/4 HP

## GO 68HD

## Gorlitz Cable Machines

Model	Cable Size	Motor HP	RPM	Pipe Sizes	L x W x H	Shipping Wt.	Blades	Cone Chucks	Reg. Chucks	Connectors	Splices	Retrievers	Wrenches	Tool box	Foot Switch	Power Feeder	
GO 15SE	1/4" x 35'	1/6	265	1 1/4" - 2"		34									1		
GO 15	1/4" x 35'	1/6	265			33											
GO 15A	1/4" x 50'	1/6	265		16"x10"x14"	35								2	A	A	
GO 250	1/4" x 50'	1/4	230		18"x14"x16"	44								3	A	A	
GO 31	5/16" x 25'	1.85	0-450		17"x9x9"	15									A		
GO 380A	3/8" x 90'	1/4	230	1 1/2" - 3"	18"x14"x16"	60	5				2	2	A	3	A	A	
GO 380/250	3/8" x 65'			75													
GO 380A /250	3/8" x 90'			81													
GO 50A	3/8" x 90"	1/3	190	1 1/2" -3"	28"x18"x20"	86	5				2	2	A	2	A	A	
GO 50A PE						81											
GO 50	1/2" x 80'			2" - 3"	28"x18"x19"	100											
GO 50 PE																	
GO 50S	1/2" x 125'			28"x20"x22"	135												
GO 62	3/8" x 90', 1/2" x 80'	1/3	165	1 1/2" - 4"	35"x22"x24"	258	12	A	2	2	4	6	1	1	1	1	
GO 62 PE				246													
GO 62A	5/8" x 100'			3" - 4"		183											
GO 62A PE		176															
GO 68	11/16" x 150'	1/2	160	3" - 8"	43"x26"x30"	268	12	1	2	2	A	2	1	1	1	1	
GO 68 PE						261											
GO 68HD	3/4" x 150"	3/4	175	3" - 10"	285												
GO 68HD PE					278												

Please call for assistance and prices.







Please see [www.rjmcompany.com](http://www.rjmcompany.com) for part numbers and prices.

**Gorlitz Cables:** Heat treated high tensile wire for durable and flexible cable.

**Cable Sizes:** 1/4", 9/32", 3/8", 13/32, 1/2", 5/8", 11/16", 3/4"



			
<b>Hollow Core:</b> Hollow cables are most common, lighter and lower cost than innercore.	<b>Innercore:</b> The outer core tightens on the innercore when under torque stiffening the cable.	<b>Drop Heads</b> guides cleaning tip around bends. Permanently crimped or removable.	<b>Bulbhead</b> cables provide flexible open cable and a blade connector for small cables. <b>CB &amp; ICB</b>

**Cable Ends:** 1/4" - 3/8" bulbhead or drop heads; 3/8" - 1/2" ends optional; 5/8", 11/16", 3/4" cables include ends.



Male End



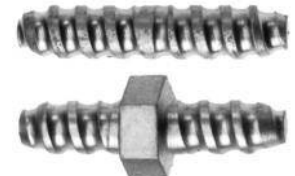
Slip Joint End



Slip Joint Chuck



Split Pin



Splices



Cone Chuck



Blade Holder



Finger Leader



Combination Retriever



Hook Retriever

## Blades:

1/2" wide: 3/8—1/2" cable: K01—K05A blades with 1/4" hole, wide  
3/4" wide: 5/8" 11/16", 3/4" cable: K06—K25, 3/8" hole  
1" wide: K26—K29



## Cable Machine Accessories:



## Gorlitz GO3500 & GO4000

Both include 18 hp, 688cc Honda engine, removable reel includes stainless swivel and adjustable reel brake, quick disconnect fittings from the hose reel and pump, 3/8" x 300' jetter hose (4" - 10" pipes), 1/8" x 75' jetter hose (1 1/2" - 3" pipes), electric start, 7 nozzles, nozzle cleaning kit, trigger gun, gloves, face shield, toolbox: 310 lbs  
**GO 3500 5.5 gpm**  
**GO 4000 9 gpm**



## Gorlitz GO3000:

Blast 1 1/2" to 8" drains, 13 hp Honda, 3000 psi, 4.5 gpm, electric start, hydro-pulsation, 7 nozzles, nozzle cleaning kit, trigger gun, liquid injector, mesh filter, pressure regulator, back flow check valve, adjustable reel brake, pressure safety valve, gloves, face shield, toolbox, 1/8" x 75', 3/8" x 300' jetter hose: 31"L x 25"W x 40"H, 185 lbs



## Gorlitz GO2000

6.5 hp Honda engine, 2000 psi, 3 gpm, electric start, 6 nozzles, nozzle cleaning kit, liquid injector, gloves, face shield, toolbox, freight additional, 130 lbs, 24" x 24" x 20"



## Gorlitz GO1500 & GO1500A

2 hp, 1500 psi, 2.1 gpm, 1/8" x 50' (1 1/2" to 3" pipes) and jetter hose, hose reel for 1/8" hose, 1/4" x 100' jetter hose (2" to 4" pipes), hose reel for 1/4" hose, 6 nozzles, nozzle cleaning kit, gloves



## Jetter Hose

Quality at competitive prices:  
4000 psi: 1/8", 1/4", 3/8", 1/2"  
2500 psi: 3/4", 1"



Turbo Nozzle



Foot Pedal



Hose Dolly



Hose Caddy

## Jetter Nozzles

1/8", 1/4", 3/8", 1/2"  
 Rear jets only or front and rear jets



Leader



Rotating



Laser



Corner



Ball



Drop Head



## Power Mole PD-33M Pipe Bursting Machine

New compact design, only 20" x 20" footprint  
 11" long cone / pulling eye pulls farther into the pit  
 Pulls 30 tons to burst 3/4" to 6" pipes  
 Powered with most excavators or portable power pack  
 Replaceable cutting blades.  
 Hose dolly and cable reel included  
 Choose 0, 1, 3 blades  
 Quick disassembly  
 6 fpm



PD-22  
Water services



## Directional Boring & Pipe Bursting

Trenchless pipe & conduit installation  
 Accurately track and steer  
 Uses rods and / or cable  
 Simple and durable  
 Directional steering and tracking  
 Low cost



### PD4

1/2" to 4" pipes  
 9 feet per minute  
 37,714 pounds force  
 Economical  
 4" pipe system

### PD6

1/2" to 8" pipes  
 7 feet per minute  
 84,822 pounds force

### PD7

1/2" to 12" pipes  
 112,00 pounds force

## HDPE Pipe Fusion Machines

15 Models for **1" to 63" Pipes**  
 Electro-fusion machines  
 Socket Fusion  
 Scrapers  
 Bevelers  
 Pipe Cutters  
 Hot Plates



## Jameson Rodders

Leading quality rodders since 1980  
 Swivel eyes, roller guides, swivel couplings, grapples, 12" & 24" stinger tips, splice repair kits



Model	Dia.	Lengths	Strength	Conduits
Easy Buddy	1/4"	300 - 400	400 lbs	1"-2"
Good Buddy I, II, III	3/8"	300 - 600	1000 lbs	2" - 4"
Big, Mega	1/2"	400 -1500	800 lbs	> 4"

## Odor Control Biofilters

Lowest overall cost  
6 - 8 year media life  
No chemical costs  
No carbon replacements costs  
**All natural & regenerating**  
Low maintenance  
Only HDPE or stainless steel  
in contact with odor



Vents



Manholes



Lift Station



Wastewater Plants



## Rhino Utility Markers



**Tri-view posts: seen from all directions, pops back up even in cold weather**

"HideOut" pop up tracer wire pedestal  
Posts: **Tri-view**, tracer wire posts, fiberglass, hybrid  
Surface markers for soil, curbs, streets, ...  
Hydrant "out of service" signs  
Signs



## RD316 Metal Detector

Finds 6" CI valve boxes & manhole lids to **8 feet deep**  
Unique **Erase** feature removes interference from nearby metal objects.  
Power line indicator  
**5-year warranty**  
Submersible up to controls  
100 hour battery life  
Volume and sensitivity controls  
Soft case included



## RD312 Metal Detector

Simple 2 button operation  
Advanced interference rejection with automatic sensitivity adjustment  
Depth: 6" valve lids to 16" deep, 25" manhole cover 25" deep.  
Value priced  
Water proof search head  
Angle and height adjustment with telescoping head



## M130 Metal Detector

Detects objects up to 36" deep  
Easily find valve lids and manhole covers  
2.4 lbs., 38" long, search head 8" dia.



Thank for reviewing our catalog. Since 2002 RJM Equipment Sales, Inc. aims for the best service, support, sales and training at purchase and for the life of our products for happy customers forever. We have factory trained technicians for camera and other service.



RJM Equipment Sales, Inc

**800-620-4773**

**360-828-5732**

9808 NE 134th Ave.

Vancouver, WA 98682

Sales Manager: Brian Moss

[brianmoss@rjmcompany.com](mailto:brianmoss@rjmcompany.com)

