

The Marquise Model JMAXX®

Frame

The Marquise's frame consists of a uni-body construction which allows the motor, head bearing, and reel shaft assemblies to be bolted directly to the frame.

Electrical Wiring

The Marquise's electrical wiring is located in the conduit box on the right side of the motor, housing both the forward/reverse switch and the air foot switch. The Ground Fault Circuit Interrupter (GFCI) is built into the electrical cord for added safety.

The air foot switch is standard equipment on The Marquise. This switch allows the operator to turn the machine on and off while the hands stay on the cable.

RPM/Drive

The Marquise has a 1/3 HP motor and operates at 200 rpm's. The heavy-duty, self-aligning head bearing for The Marquise has a cast housing which reduces stress and prevents premature wear.

Maneuverability

The Marquise can have 6" wheels and a detachable "T" handle added.

Cable and Reel Selections

The Marquise was designed to handle several reel sizes. The reel selected is set in place and slipped onto the reel shaft. Drive lugs are mounted on the drive plate and slip through the openings in the back of the reel. The reel is held in place by the revolving arm.

Standard Package

The Marquise's standard package comes with the following items: revolving arm; 1/3 HP motor at 200 rpm; 19" open metal spoke reel; 1/2" x 75' cable; reel attachment; and choice of cable end fittings. (Wheels and handle are not standard.)

See the machine packages and accessories chart on the next page for additional options.



As shown at left with D1S reel, a D8SL9A arm with a 31020 arm extension, a stubbed GFCI cord, and a mobility kit. (See options on the next page.)



As shown above with D1SE reel, a D8SL9A arm with a 31020 arm extension, a stubbed GFCI cord, and a mobility kit. (See options on the next page.)

Machine Specifications (specs are approximate)

Length

Machine only	26"
With handle and wheels	44"

Width

Machine only	13"
With wheels and handle	17-1/2"

Height

Machine (with or without wheels & handle)	17"
---	-----

Weight

Base Machine with 15.1 lb. 1/3 HP motor	44.5 lbs.
Machine with wheels & handle	56.5 lbs.
Narrow Wheels	13 lbs.
14" Open Metal Spoke Reel	8.5 lbs.
14" Enclosed Metal Spoke Reel	10.5 lbs.
16" Open Metal Spoke Reel	9.5 lbs.
16" Enclosed Metal Spoke Reel	11.5 lbs.
19" Open Metal Spoke Reel	10.5 lbs.
19" Enclosed Metal Spoke Reel	16.5 lbs.

Line Size	1-1/4" - 4"
-----------------	-------------

Recommended Use: residential lines, roof vents, sinks, bath tubs, shower drains, and laundry drains.



REELS			REEL ATTACHMENTS	FLOATING RINGS	FLOATING RING ATTACHMENTS	REVOLVING ARM	CABLES*	
Part #	Dimensions	Description	Part #	Part #	Part #	Part #	Part #	Dimensions
D1L	14" dia., 9" h	Open Metal Spoke Reel	D3L	None	None	D8SL2A with 31021 Arm Extension	_25-075 _31-060 _38-060	1/4" up to 75' 5/16" up to 60' 3/8" up to 60'
D1LE	14" dia., 8" h	Enclosed Metal Spoke Reel	D3S	None	None	D8SL2A with 31021 Arm Extension	_25-075 _31-060 _38-060	1/4" up to 75' 5/16" up to 60' 3/8" up to 60'
15ERP	15" dia., 8" h	Enclosed Polycarbonate Reel	None	None	None	D8SL2A with 31021 Arm Extension	_25-075 _31-060 _38-060	1/4" up to 75' 5/16" up to 60' 3/8" up to 60'
D1S	16" dia., 9" h	Open Metal Spoke Reel (Standard)	D3L	D2JS	D3E	D8SL2A with 31021 Arm Extension	_25-100 _31-090 _38-090 _50-075	1/4" up to 100' 5/16" up to 90' 3/8" up to 90' 1/2" up to 75'
D1SE	16" dia., 8.5" h	Enclosed Metal Spoke Reel	D3S	D2JS	D3E	D8SL2A with 31021 Arm Extension	_25-100 _31-090 _38-090 _50-075	1/4" up to 100' 5/16" up to 90' 3/8" up to 90' 1/2" up to 75'
D1S1	19" dia., 8.5" h	Open Metal Spoke Reel	D3L	D2JM D2JR	D3E D3R (male end) D3RJ (slip joint)	D8SL9A with 31020 Arm Extension	_50-090 _62-080 _69-080	1/2" up to 90' 5/8" up to 80' 11/16" up to 80'
D1S1E	19" dia., 8.5" h	Enclosed Metal Spoke Reel	D3S	D2JM D2JR	D3E D3R (male end) D3RJ (slip joint)	D8SL9A with 31020 Arm Extension	_50-090 _62-080 _69-080	1/2" up to 90' 5/8" up to 80' 11/16" up to 80'

MACHINE PACKAGES & ACCESSORIES	
Part #	Description
D3113200	1/3 HP Motor at 200 rpm
JMaxxSP	1/3 HP Motor at 200 rpm without PCFR and with D1S reel
JMaxxSPE	1/3 HP Motor at 200 rpm without PCFR and with D1SE reel
JMaxxSPA	1/3 HP Motor at 200 rpm without PCFR and with D1S1 reel
JMaxxSPEA	1/3 HP Motor at 200 rpm without PCFR and with D1S1E reel
31005	1/3 HP Motor
31001	Mobility Kit (wheels & handle)
DRC14	Reel Cover for 14" Open Reel
DRC16	Reel Cover for 16" Open Reel
DRC19	Reel Cover for 19" Open Reel

* Add **CH** in front of cable part # for Hollow Core
& Add **LW** after part # if you want it to be Loose Wound

* Add **CI** in front of cable part # for Inner Core
& Add **LW** after part # if you want it to be Loose Wound

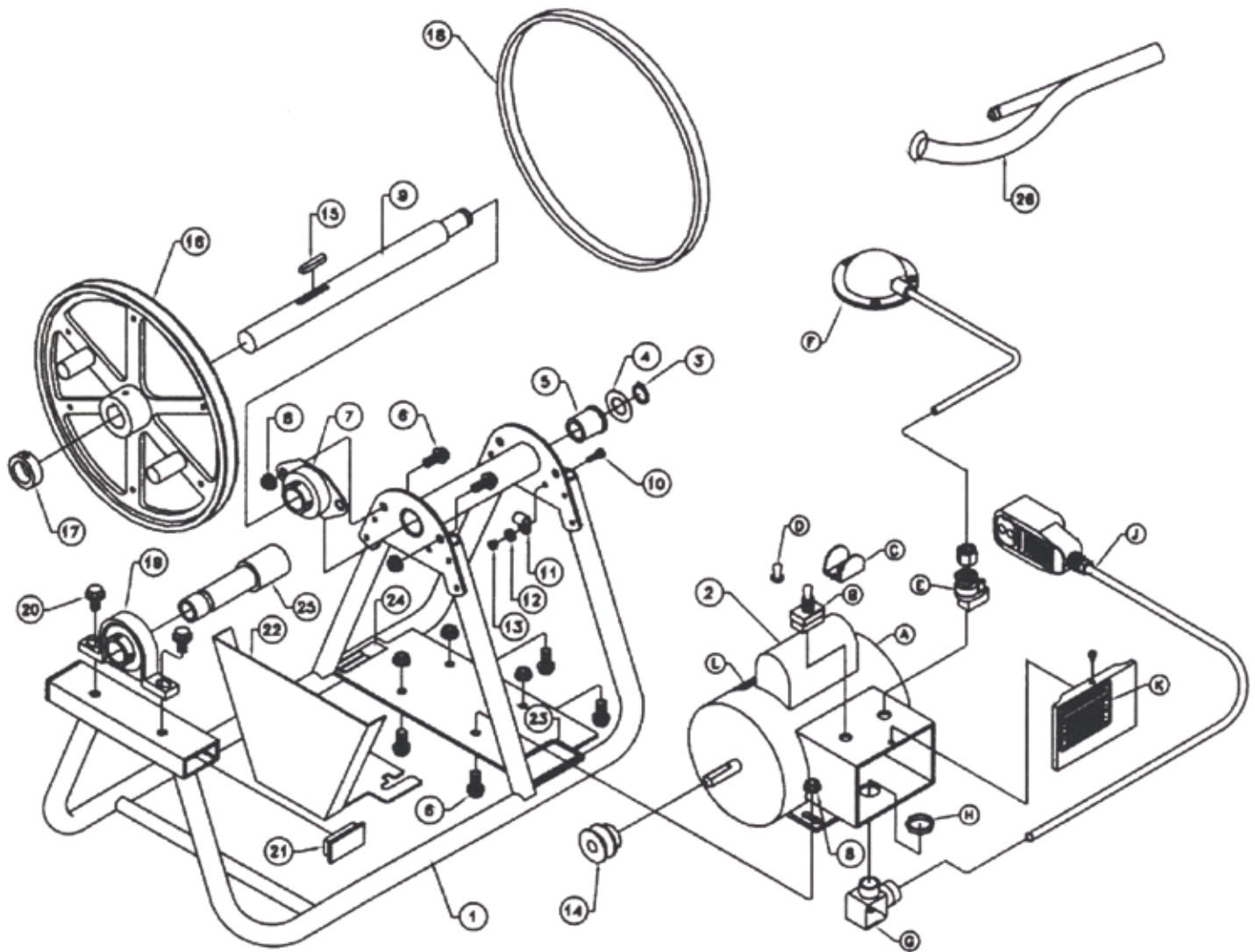
* Add **CC** in front of cable part # for Cable-in-Cable (3/4" x 50' or 3/4" x 100' and 11/16" x 50' or 11/16" x 100')

* Add **OH** in front of cable part # for Oil Tempered Hollow Core (11/16" and 3/4" only)

* Maximum length of cable is not always the recommended length. Custom lengths are available.



The Marquise Model JMAXX®



THE MARQUISE SCHEMATICS

RJM Company
360-828-5732
www.rjmcompany.com



The entire line item in grey or light red identifies the name of an entire assembly. The colored part numbers below it identify all the parts that make up the complete assembly. The items in yellow identify the name of an entire assembly that is within another assembly. You can purchase the entire assembly, or just the individual parts.

PARTS IDENTIFICATION			
Item #	Qty.	Part #	Description
1	1	D31015	Frame
2	1	31005	Motor Assembly
A	1	31005A	Motor, 1/3 HP
B	1	25002	Switch, Detent - Forward/Reverse
C	1	25015	Switch Guard
D	1	ECT26	Rubber Switch boot
E	1	25061	Air Foot On/Off Switch with Nut
F	1	25074	Foot Pedal with 10' Tube
G	1	ECT34	1/2" Strain Relief, 90 degree Snap Elbow with Dome Nut
H	1	ELN1	Electrical Nut, 1/2" National Pipe Thread
J	1	25166	GFCI cord, 16/3 x 22"
K	1	25064	Decal, Forward/Reverse Caution
L	1	25212	Decal, GFCI Rotating Danger
3	1	RRING14	External "E" Ring
4	1	WA32	Machine Bushing
5	1	SB19	Reel Shaft Bearing
6	6	FLSC1	5/16"-18 x 3/4" Hex Head Flange Screw
7	1	SB5	Bearing, Reel Shaft
8	6	FLNUT3	5/16"-18 Hex Flange Nut, Locking
9	1	31040	Reel Shaft
10	1	PHSC5	#10-32 x 1/2" Pan Head Thread Cutting Machine Screw
11	1	CCL1	Cable Clamp, Black
12	1	WA5	#10 External Tooth Lock Washer
13	1	HXNUT4	#10-32 Hex Nut
14	1	41010A	Sheave, 4L x 1-1/2" outside diameter
15	1	KEY6	1/4" x 1-3/8" Square Key
16	1	41010B	Sheave, 4L x 11-1/4" outside diameter with Drive Lugs
	2	25090A	Drive Lug
	2	MM4	Drive Lug Cap, Red
	2	WA10	3/8" Split Lock Washer
	1	41008	Guard, Sheave
17	1	25120	Reel Shaft Bushing
18	1	41010C	Belt, 4L x 37"
19	1	SB8	Head Bearing
20	2	FLSC7	3/8"-16 x 5/8" Hex Head Flange Screw
21	2	MM16	End Cap, Black
22	1	41009	Motor Guard



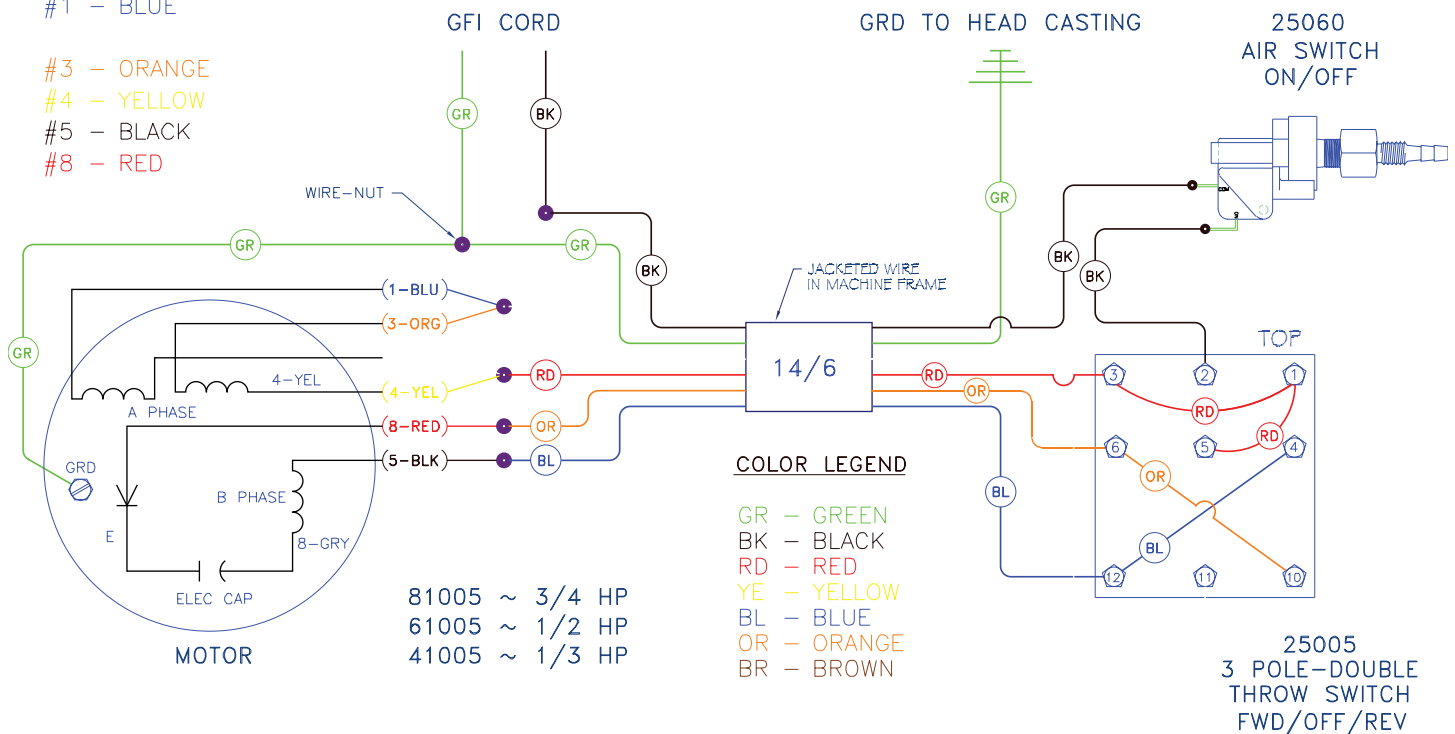
The entire line item in grey or light red identifies the name of an entire assembly. The colored part numbers below it identify all the parts that make up the complete assembly. The items in yellow identify the name of an entire assembly that is within another assembly. You can purchase the entire assembly, or just the individual parts.

PARTS IDENTIFICATION			
Item #	Qty.	Part #	Description
23	1	D25000	Decal, Machine Logo
24	1	SNTAGJMAXX	Serial Number Tag
25	1	31020	Revolving Arm Extension
26	1	D8SL9A	Revolving Arm without Collar

ELECTRICAL SCHEMATIC

MOTOR LEADS

- #1 - BLUE
- #3 - ORANGE
- #4 - YELLOW
- #5 - BLACK
- #8 - RED



BALDOR MOTOR WIRING DIAGRAM - CD0001C
1/3, 1/2 & 3/4 hp - 60 HZ ~ LOW VOLTAGE
W/OUT A.T.O. ~ USING 6 CONDUCTOR SOW CABLE

The wiring diagram for the basic Marquise (JMaxx®) is shown above. If you experience any electrical difficulties in operating your machine, or you notice any frayed or inadequate wiring, or wiring that does not conform to the diagram, discontinue use of your machine immediately and have a qualified electrician repair it, or return it for repair to Duracable Manufacturing Company.