

# RJM 2021 Equipment Catalog



<u>Products</u>	<u>Page</u>
Utility Locators:	2 - 4
Plastic Pipe Locators:	5
Utility Markers:	5
Metal Detectors:	5
Water Leak Detectors:	6 - 7
Pipe Cameras:	8 - 11
Pipe Fusion Tools:	12
Odor Control Biofilters:	12
Sewer Snakes:	13 - 14
Sewer Jetters:	15
Pipe Boring / Bursting:	16
Drill Locators:	16

## Radiodetection RD8200 Precision Locator: All R7200 features plus:

- ⊙ **Remote Control of Transmitter:** Change frequency and output from **1400 feet**.
- ⊙ **Accurate GPS within 24"** using free "RD Map" and Geode GPS
- ⊙ **5 Individual Power Harmonics:** Identify separate cables better
- ⊙ **New 4 Khz Frequency**
- ⊙ **Choose the Best Frequency for the Application:** 18 locator frequencies, 4 sonde frequencies, 5 passive frequencies
- ⊙ **30% Stronger Signal:** Single peak antenna for stronger signal
- ⊙ Null antenna: Simple to pinpoint even at deep depths. Fast and easy with different tones on right and left. Indicates accuracy when compared to peak.
- ⊙ **Simultaneous power and radio signal detection**
- ⊙ **Current Direction:** New 4K CD frequency works in more places and identifies when locating the same utility that the transmitter is connected to with better accuracy than current measurement.



## Radiodetection RD7200 and R8200 Features:

- ⊙ New speaker in an easier to hear location with louder and higher frequencies.
- ⊙ **Vibrating handle warns of swing**, nearby power and overload.
- ⊙ **Guidance Mode:** Intelligently combining 5 signals for the easiest, fastest and most accuracy
- ⊙ **Precision Antennas:** Ferrite core antennas **diamond ground to 0.02"**, **aligned to 0.1 degrees** and secured for long term precision.
- ⊙ **Withstands water jets** and one meter drop to concrete, IP65
- ⊙ **High Sensitivity Power Frequencies:** Detects 16 power frequencies at once for extremely sensitive detection.
- ⊙ **Verify Accuracy:** Simultaneously compare the peak and true null or guidance antennas to determine accuracy without assuming.
- ⊙ CPS frequency: Finds cathodically protected water and gas pipes
- ⊙ **Li-ion battery:** 35 hour life, lighter, better low temperature life, no battery corrosion or connection problems, greener choice (optional)
- ⊙ **Live power cable warning**
- ⊙ Frequency on & off selection for faster and simpler use
- ⊙ **3 Year Warranty**
- ⊙ **Peak Mode + Guidance Arrows:** Combines the two most accurate signals in an easy to follow display
- ⊙ **Displays Utility Direction:** Large center line stays parallel to the utility
- ⊙ Free onsite firmware updates
- ⊙ **On-site training included with all locators**
- ⊙ **Balanced:** Hangs vertically from the handle improving accuracy and preventing wrist strain.
- ⊙ **Utility Identification:** **Automatically** displays signal strength to identify the utility
- ⊙ **Right & Left Arrows**
- ⊙ **Automatic TruDepth:** **Automatically** displays the depth **only** when aligned and near the pipe preventing display of incorrect depths.
- ⊙ **Onsite Calibration Check:** Check & document calibration from your computer.
- ⊙ **Dynamic Overload Protection:** Prevents signal overload in areas with strong signals.
- ⊙ **Cable Fault Location:** Forward & reverse arrows to the cable ground fault from all directions
- ⊙ Enhanced Checking: Comprehensive self test with locate circuit test
- ⊙ Usage logging: Automatically stores locate parameters every second for documentation



## Radiodetection Marker Locators All RD7100 and RD8100 features plus:

- ⊗ **Locate the utility and markers simultaneously**
- ⊗ **Automatically selects last marker frequency when antenna is flipped down**
- ⊗ **20 feet maximum EMS marker depth, 4.9 feet marker ball maximum depth**
- ⊗ **9 different marker types**



Radiodetection



## Radiodetection Transmitters



Radiodetection

- 90 volt output for stronger signals, 10 watts direct and 1 watt induction
- **Withstands water jets** - IP65
- 3 year warranty with registration
- Remotely control transmitter from 1400 feet (TX-10B)
- Accessory storage tray in base
- **Current Direction** accurately identifies the same utility (Tx-10)
- Select from 32 direct, 8 induction, 4 CD identification frequencies
- Large, high contrast, backlight LCD display with clear information
- Rechargeable **Li-ion battery with quick change battery door** optional
- Signal strength displayed and tone



## Radiodetection Locator Accessories:



Radiodetection

- ⊗ Longer lasting leads
- ⊗ Li-ion batteries for transmitters and receivers with quick change battery doors
- ⊗ Ground fault locating A-frame
- ⊗ Remote control transmitter switch directs signal to 4 different utilities
- ⊗ 3 Cases: Soft, light hard case, heavy duty hard case
- ⊗ Live cable connector applies signal to live power cables for better accuracy
- ⊗ Induction clamps: 2", 4", 5", 8.5", CD transmitter, receiver
- ⊗ Stethoscope antennas: CD, Small, Large, High Gain
- ⊗ Submersible antenna



Live Cable Connector

### Sondes:

- Accurately locate pipes and conduits to 50 feet depth
- 9 choices: 0.25", 0.35", 0.5", 0.7", 0.9", 1.5", 2.5" dia.
- 3 frequencies: 512 hz, 8 Khz, 33 Khz



Sondes



Induction Clamps



Li-ion Battery



Stethoscope antennas



Cases



## Juniper Geode GPS

- Blu-tooth to Android, Apple or Windows mobile device
- Map and locate with depth and other locate information
- Accuracy: 4" post processed, 68% < 11.8", 98% < 23.8"
- Compact: 4.4" x 4.4" x 1.7"
- Submersible over 1 meter, IP68
- 10 hour rechargeable Li-ion battery
- Light: only 12.8 oz.



## Radiodetection RD5100: Quick, easy, value priced

- Guidance Mode: Center the gap, left & right arrows, large line shows pipe direction, combines easy to follow tones (continuous left, silent center, pulsing right tone)
- 3 year warranty
- Value priced
- Withstands water jets
- Automatic depth, automatic utility identification, automatic gain

**RD5100S:** 3 camera / sonde frequencies, 4 optional frequencies

**RD5100 H<sub>2</sub>O:** Easiest locator, 83 Khz, power, low cost, includes Li-ion batteries included

**RD5100 H<sub>2</sub>O+ Kit:** Control the 10 watt transmitter from 1400 feet, 9 line & 3 sonde frequencies, current direction identifies same utility, power line warning



## Radiodetection CAT4: Simple and Low Cost

- **Scan [power + radio + transmitter] frequencies together one step**
- Simple operation: Turns on automatically when picked up
- Swing warning available
- Value priced
- Automatic GPS and automatic usage logging available (optional)
- Frequencies: Power, radio, CPS, sondes, 3 frequencies
- Strike Alert: warns when near live power line
- Dual frequency signal boost
- Detachable loud speaker for noisy environments



Radiodetection



## TDR Cable Fault Locator Riser Bond 3300

- Stores screen cable data
- 12 miles range
- Intermittent fault detection
- Noise filters with 8 settings
- 0.01% reading, within 0.5 ft.
- Find shorts, opens, water damage, crimps and more.in ethernet, CATV, twisted pair phone, low voltage cables



## TDR Cable Fault Locator Lexxi 1660

- 1% accuracy & 1% resolution
- 19,000' range
- Economical
- Find shorts, opens, water damage, crimps and more.in ethernet, CATV, twisted pair phone, low voltage cables



## Jameson Rodders

- Leading quality rodders since 1980
- Swivel eyes, roller guides, swivel couplings, grapples, 12" & 24" stinger tips, splice repair kits



Model	Dia.	Lengths	Strength	Conduits
Easy Buddy	1/4"	300' - 400'	400 lbs	1" - 2"
Good Buddy I, II, III	3/8"	300' - 600'	1000 lbs	2" - 4"
Big, Mega	1/2"	400' - 1500'	800 lbs	> 4"

## Schonstedt Metal Detectors

- 7 year warranty
- Weather resistant, IP54
- USA market leader since 1953
- Made in USA
- Find valve & manhole covers, metal pipes, well casings, septic tanks ...
- Not affected by aluminum, copper or brass.
- The GA-92 collapses to 15.5".

SCHONSTEDT



GA-92

Maggie

Spot

## RD312 Metal Detector

- Simple 2 button operation
- Advanced interference rejection with automatic sensitivity adjustment
- Depth:
  - \* 6" valve lids to 16" deep
  - \* Manhole covers to 25" deep
- Value priced
- Water proof search head
- Detects all metals



## M130 Metal Detector

- Detects objects up to 36" deep
- Easily find valve lids and manhole covers
- 2.4 lbs., 38" long, search head 8" dia.
- Detects all metals



## Rhino Utility Markers



- ♦ **Tri-view posts: seen from all directions, pops back up even in cold weather**
- ♦ "HideOut" pop up tracer wire pedestal
- ♦ Posts: Triview, tracer wire posts, fiberglass, hybrid
- ♦ Surface markers for soil, curbs, streets, ...
- ♦ Signs: 10 year warranty,
- ♦ Hydrant "out of service" signs
- ♦ Mark sewer lateral connections,



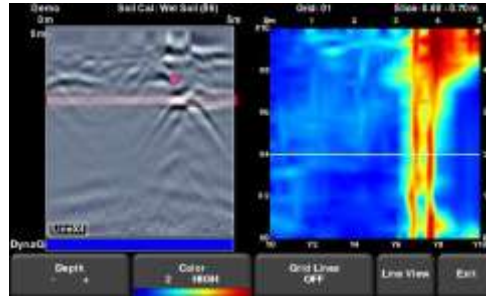
# Plastic Pipe Locators

## Ground Penetrating Radar - RD1100 & RD1500



Radiodetection

- 3 frequency ranges
- GPS & Wi-Fi
- On-site map view
- Depth sections
- 3D data export
- Color touch screen
- Easy operation
- Low price
- Lightweight carbon fiber frame
- On screen utility markers



## Sewerin Combiphon Plastic Pipe Locator

The Sewerin Stopper connects to a hydrant or other part of the water system and creates water pulses. The "Striker" taps on the pipe. The pulse and tapping interval and intensity are adjustable with the electronic controller. Track the pipe sounds with the A200, AC200, A150, A50, T10 or Stethophon water leak detectors.



Generator / Controller



Stopper



Striker

## Plastic Water Service Locator

Connect to a hose bibb or other part of the water system to create safe, low intensity water pulses then locate the pipe by listening with a Sewerin or other leak detector.

- Low cost, simple, quick setup



## Plastic Pipe Locator: RD500

Creates water pulses to track water pipes.

- Lowest cost water pulse generator
  - Low power: irrigation
  - Medium power: water service
  - High power 2" and larger
  - Water pressure: 40-70 psi
- 3 intensities; three different versions for small, medium and large water pipes.



## Ultratrac APL Plastic Pipe Locator

Ground sonar sends and receives sound waves to determine buried object locations including plastic water services, sewer laterals, septic tanks, gas pipes ...

- Works in clay soils that limit ground penetrating radar depth
- No connection to the pipe needed
- Easy guided operation



## Jameson Locatable Rodders

- Locate conduits, storm drains, live water vices, sewer mains
- Push sondes, locate entire length, pull cable
- Fiberglass rod with copper wire center
- Jameson quality since 1954



mains and water ser-

Dia.	Lengths	Conduit
1/8"	100' - 200'	1/2" - 1"
3/16"	100' - 300'	1/2" - 4"
5/16"	300' - 800'	2" - 4"
7/16"	400' - 1500'	> 4"



# Sewer Water Leak Detectors / Correlators

## Sewerin AC200 Water Leak Correlators / Leak Detector

### **Correlator + Leak Detector + Plastic Pipe Locator + Leak Survey**

**AC200** = Leak detector and correlator

**A200** = Leak detector with pinpointing microphones

**C200** = Correlator with transmitters & correlator microphones

- ♦ **GPS transmitters and receiver** to track leaks and survey locations
- ♦ **Replays & displays last 7 listening points** for comparison of leak sounds without delay between listening points
- ♦ Removes background noises from replay
- ♦ Peak suppression finds multiple leaks
- ♦ Easy sound velocity measurement
- ♦ **Submersible wireless controller & microphones**
- ♦ **Wireless microphones with testrod**
- ♦ Automatically scans frequencies and sets precision background noise filters
- ♦ **Color touch screen** with easy controls, 5.7"
- ♦ Hydrophones correlate better on hydrants with non-metallic pipes
- ♦ Extreme sound blocker limiter with 5 level settings
- ♦ **Thumb sensing mute switch with no moving parts**
- ♦ One connection outside the case charges everything
- ♦ WaterCom automatically transfers leak locations, sounds, data, reports
- ♦ Sewerin's best leak detector, the world's leading leak detector manufacturer
- ♦ Two year warranty
- ♦ **LED** microphones to light valves for faster better attachment
- ♦ **Wireless headphones**
- ♦ Correlation quality indicator



## Sewerin A150 Water Leak Detector

- ♦ Sewerin's best A200 microphones, **wireless** headphones, case,
- ♦ Automatically scans & sets background noise filters
- ♦ Precise background noise filters: 6 lower, 6 upper
- ♦ Background power noise filter
- ♦ 16 hour rechargeable Li-ion battery
- ♦ 3 level extreme sound blocking
- ♦ Displays current and previous 2 sound levels
- ♦ Corded microphone testrod
- ♦ Neck strap and belt clip
- ♦ Compact: 4.5"x2.6"x4.5",
- ♦ Light: only 14 oz.



# Sewerin Water Leak Detectors

## Sewerin A50 Water Leak Detector

- ◆ **Wireless** headphones or wired headphones
- ◆ Background noise filters, 6 lower & 6 upper
- ◆ Wind protected microphones
- ◆ Weather proof, rechargeable batteries
- ◆ Displays current & last 2 reading levels
- ◆ Extreme sound protection with 3 levels



## Sewerin T10 Water Leak & Survey Tool

- ◆ Thumb sensor mute switch eliminates switch wear
- ◆ **Wireless** or wired headphones
- ◆ 8 background noise filters
- ◆ Maximum noise limiter
- ◆ Wind noise shields, rubber or foam



## Sewerin Stethophon Leak Detector

- ◆ **Wireless** or wired headphones
- ◆ Displays current & **previous** readings
- ◆ 8 or 5 filter ranges, max noise limiter
- ◆ Simple operation & compact
- ◆ 46" rod & second microphone
- ◆ Built in and separate microphones
- ◆ Value priced



## Water Leak Loggers: Sewerin Sepem 115

- ◆ **Detect leaks up to 1600 feet distance, highest sensitivity loggers**
- ◆ **Lowest labor and equipment cost** to survey water systems
- ◆ Automatically listens when other noises are minimum and indicates leaks
- ◆ Easy data collection with dedicated master logger



## MGD2002 Helium & Hydrogen Detector

- ◆ Finds helium or hydrogen
- ◆ Displays concentrations
- ◆ 25 ppm helium minimum.
- ◆ Light weight telescoping ground probe



## Sewerin Variotec VT460 Gas Detector

- ◆ Measures hydrogen of 0.1 ppm
- ◆ Wheeled probe, short probe, long probe
- ◆ Easy to read display in sunlight
- ◆ Simple operation





## M18

- **12.1" VividHD™ LCD** nearly **twice as bright** as the leading brand.
- Quick change 18V Milwaukee style battery port
- **8x Digital zoom & pan**
- **1-touch USB recording & playback**
- Counter with 6 screen positions
- 512 hz sonde, titles, voice recording
- Easy operation
- Adjustable camera brightness
- Cool running camera lights for long life
- Reels: Hathorn, Ridgid (not TiltSense™), Pearpoint, Ratech, General Wire, G-Series, Gatorcam, G4
- **WiFi** to mobile devices (optional)
- Weather resistant M10 model available
- Made in North America



## Hathorn Reels, Pushrods and Cameras

Size	Drum Dia.	Height	Drum Width	Rod Diameter	Rod Length	Cameras	Self Leveling Available	Wi-Fi Available
Micron	11 3/4"	15	3 5/8"	1/4"	100'	7/8", 1"	No	Yes
Mini	16.5	24	5	3/8"	100', 200'	1", 1.23", 1.35"	Yes	Yes
Mid	18	24	6.5	0.4", 1/2"	200'	1.23", 1.43", 1.68"	Yes	Yes
Large	25.5	33	6	1/2"	200', 300', 400'	1.43", 1.68"	Yes	Yes
Extra	29 3/8"	33	6 3/8"	1/2", 5/8"	500'	1.43", 1.68"	Yes	No

## Hathorn Reels

- North American steel
- Precision laser distance counter
- Metal controller mounting bracket
- Sealed pushrod connection
- 5 sizes: 100', 200', 300', 400', 500'



## WiFi Reels

- Save by using a Apple or Android mobile device to display and record with up to 4 users at once
- Audio voice recording
- Send files to text, Email, cloud.
- 18V Milwaukee battery port
- No controller mounting bracket

## Hathorn Accessories

- Reel to controller cables
- Sondes
- Pushrod re-termination kits
- Camera head skids
- Locators
- Reel covers



## Camera Heads



## M7

- 18V Milwaukee battery
- USB recording
- 512 hz sonde with switch
- On-screen counter and text
- 3/8" or 0.4" or 1/2" x 200' pushrod
- Self-leveling camera available
- 7.4" display mounted on reel
- Reel brake, Wi-Fi available



## M2

- 512 hz sonde with switch
- Reel mounted 7" display
- 1/2" x 100' pushrod
- 1.43" or 1.68" camera
- Optional self leveling cameras
- 18V Milwaukee battery
- Wi-Fi available



## Pearpoint P540 Push Cameras

PEARPOINT

- **Rugged controller withstands water spray**
- Records on **128GB non-mechanical SSD** for fast startup and hours recording & 3 USB memory card ports
- **Wi-Fi** live video to mobile devices, share via wireless phone hotspot, Email reports, ...
- 1-touch video and photo recording
- Intuitive dedicated buttons and complete help built-in
- 10" HD bright and clear 1280x800 TFT display
- **Roller guides** prevent frame and pushrod wear
- **Digital zoom, pan, rotation**
- **Adjustable focus**
- 7.5 hour Li-ion battery with vehicle and wall chargers, instant charge status display
- Coiled reel to controller cord stays off the ground to prevent tripping and cord damage
- Time, date, titles and distance counter with calibration
- **500' extra stiff** pushrod for longer distances and lower price than crawler cameras
- 512 hz sonde for accurate position and depth location
- Cameras: 1", 1.23" self leveling focus, 2" self leveling focus
- Pushrods available: 100', 115', 200', 400', 500' lengths
- Reporting software to professionally organize and document
- Sapphire camera windows



## Mainline Cameras: Pearpoint P550

PEARPOINT

- Pan & tilt crawler cameras for 6"-8", 6"-15", 8"-18", 8"-36" pipe inspection
- Cameras: Pan & tilt **10x optical zoom**, pan & tilt, fixed
- Elevators: powered, manual, fixed
- Reels: Powered Smart reel controls crawler and reel together to **prevent cable tangling** and require **less operators**, manual reel with lower cost
- Laser Profiling: Inspects deformations, internal diameter and flow capacity
- Camera Controls: Game pad, pendant control, joystick
- P550 controls both mainline and push cameras



## Manhole Inspection Camera: Cues QZ3

- **360x Zoom = 30x optical + 12x digital**, 63.7—2.3 viewing angle, 1/2.8 CMOS
- Full HD, 1920 x 1080 image
- 4 hour minimum Li-ion battery
- Simple and lightweight with 24' or 34' **carbon fiber telescopic pole**
- Quick inspections and surveys of manholes, pipelines, tanks, wetwells, treatment plants
- One person operation with no confined space entry
- 4 sets of LED's designed for manholes, short, medium, long pipes



## Wohler 200 250 350 Pipe Cameras

**WÖHLER**

- **Pan & tilt 1 1/2" and / or 1" fixed camera**
- **Top and bottom of the pipe** are indicated on screen
- **Angle of slope displayed**
- SD card recording (except VIS-200)
- 7" pivoting & detachable super bright LCD with 6.5 feet cable
- Distance counter, RCA video output,
- Locating sonde: **512 hz**, 8.9 Khz, 9.2 Khz
- Home button returns pan & tilt camera to straight forward
- Simple operation
- Compact case: 6.9" x 17" x 20", 18 lbs.
- 100 feet push rod cable
- Quick change rechargeable 1.5 hour batteries



## Wohler 700 with Pan & Tilt Camera

**WÖHLER**

- **HD video 1280 x 720**
- **Pan & tilt camera**, 1.5" dia. with home key
- **Live video to smart devices**
- **SD and USB** recording of video and photos
- **Focus** with touch screen or joystick
- Compact case is only 7" x 18" x 20", 22 lbs
- Locating sonde with **512 hz**, 8.9 Khz, 9.2 Khz frequencies
- On screen text, voice recording, distance, camera angle & position
- Removable sunshade
- 4 hour Li-ion battery
- 2" to 8" pipes, 100 ft pushrod



## Elite SD

**Ratech**

- 10.4" LCD
- SD card
- Lightweight, controller only 10 lbs.
- **Gel filled pushrod**
- Distance counter, date, time, titles, voice recording
- 512 hz locating sonde
- **Camera test port**
- Locally serviced
- Jetcam, crawler for 6-8" pipes, pan & tilt push camera or push camera, extra stiff pushrod, internal battery, USB recording, WiFi, USB recording
- Self leveling or non-self leveling 1 3/8" color camera for 3" - 8" pipes
- 3/4" color camera: 1.5" - 4" pipes
- 100 to **500'** pushrods



**Pan & Tilt Push Camera**



**Jetcam**



**Torpedo**



**Mainlines**



### Opticam Value priced

- 10.4" LCD display
- 1-touch record USB recording
- Rugged case
- 1.3" self leveling color camera, 480 x 720 resolution: 3" - 12" pipes
- 24-48 hour camera head service
- **Made in USA**
- 200', 300', 400' pushrod
- 10" diameter wheels, 512 hz sonde

INSIGHT  
VISION



### Universal Roller Skid

- Adjustable for 6" - 18" pipes
- 3 LED lights boost lighting
- Fits 1.9" or 2.5" max. dia. cameras
- Centers for better view
- Pushes farther



### Aluminum Skid

- Custom sizes available
- Lightweight, durable
- Spacers for 6", 8", 10" pipes



### Drain Train

- Pushes farther
- 3 skids guide better around 3" P-traps and 90 degree bends
- See better centered and above the water



### Trap Skid

- 2 skids guide around 3" P-traps and 90 degree bends
- Made in USA
- Lifetime warranty
- Up to 1.5" diameter



### HDPE Pipe Fusion Machines

- 15 Models for **1" to 63" Pipes**
- Electro-fusion machines
- Socket fusion
- Scrapers, bevelers, pipe Cutters
- Hot Plates
- Pipe alignment clamps
- Internal pipe de-badders

RITMO  
AMERICA



### Odor Control Biofilters

- Lowest overall cost
- 6 - 8 year media life
- No chemical costs
- No carbon replacements costs
- **All natural & regenerating**
- Low maintenance
- No corrosion: all HDPE or stainless steel



Vents



Manholes



Lift Station



Wastewater Plants

blotes  
Biofilter Systems

# Gorlitz Cable Machines

Quality manufactured in California since 1980 with a value price. Please call for prices and assistance for machines, cables, ends, chucks, blades and accessories.



**GO 15**



1/4"

**GO 31**



5/16"

**GO 250 /380**



1/4", 3/8"

**GO 50PE**



3/8", 1/2"

3/8", 1/2", 5/8"

11/16", 3/4"

11/16", 3/4"



**GO 62**



1/2 HP

**GO 68PE**



3/4 HP

**GO 68HD**

## Gorlitz Cable Machines

Model	Cable Size	Motor HP	RPM	Pipe Sizes	L x W x H	Shipping Wt.	Blades	Cone Chucks	Reg. Chucks	Connectors	Splices	Ends	Retrievers	Wrenches	Tool box	Foot Switch	Power Feeder	
GO 15SE	1/4" x 35'	1/6	265	1 1/4" - 2"		34										1		
GO 15	1/4" x 35'	1/6	265			33												
GO 15A	1/4" x 50'	1/6	265		16"x10"x14"	35									2	A	A	
GO 250	1/4" x 50'	1/4	230		18"x14"x16"	44									3	A	A	
GO 31	5/16" x 25'	1.85	0-450		17"x9x9"	15										A		
GO 380A	3/8" x 90'	1/4	230	1 1/2" - 3"	18"x14"x16"	60	5				2	2	A	3	A	A		
GO 380/250	3/8" x 65'			75														
GO 380A/250	3/8" x 90'			81														
GO 50A	3/8" x 90"	1/3	190	1 1/2" -3"	28"x18"x20"	86	5				2	2	A	2	A	A	A	
GO 50A PE						81												
GO 50	1/2" x 80'			2" - 3"	28"x18"x19"	100												
GO 50 PE																		
GO 50S	1/2" x 125'				28"x20"x22"	135												
GO 62	3/8" x 90', 1/2" x 80'	1/3	165	1 1/2" - 4"	35"x22"x24"	258	12	A	2	2	4	6	1	1	1	1	1	
GO 62 PE						246												
GO 62A	5/8" x 100'			3" - 4"		183												
GO 62A PE		176																
GO 68	11/16" x 150'	1/2	160	3" - 8"	43"x26"x30"	268	12	1	2	2	A	2	1	1	1	1		
GO 68 PE																	261	
GO 68HD	3/4" x 150"	3/4	175	3" - 10"	285													
GO 68HD PE					278													





Please call for assistance and prices.

Please see [www.rjmcompany.com](http://www.rjmcompany.com) for part numbers and prices.

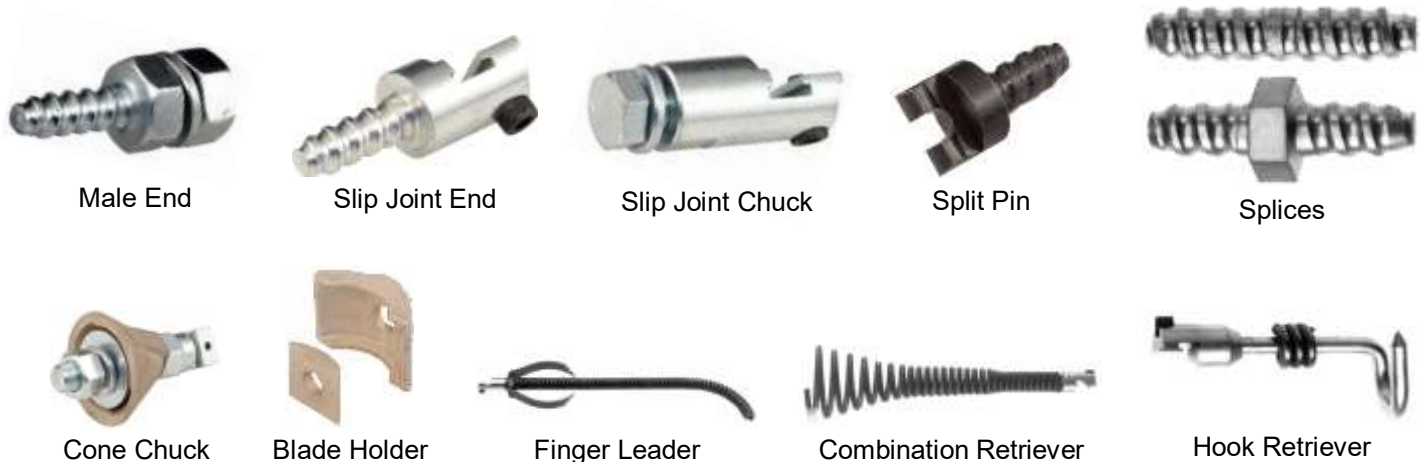
**Gorlitz Cables:** Heat treated high tensile wire for durable and flexible cable.

**Cable Sizes:** 1/4", 9/32", 3/8", 13/32, 1/2", 5/8", 11/16", 3/4"



			
<b>Hollow Core:</b> Hollow cables are most common, lighter and lower cost than innercore.	<b>Innercore:</b> The outer core tightens on the innercore when under torque stiffening the cable.	<b>Drop Heads</b> guides cleaning tip around bends. Permanently crimped or removable.	<b>Bulbhead</b> cables provide flexible open cable and a blade connector for small cables. <b>CB &amp; ICB</b>

**Cable Ends:** 1/4" - 3/8" bulbhead or drop heads; 3/8" - 1/2" ends optional; 5/8", 11/16", 3/4" cables include ends.



## Blades:

- 1/2" wide: 3/8—1/2" cable: K01—K05A blades with 1/4" hole, wide
- 3/4" wide: 5/8" 11/16", 3/4" cable: K06—K25, 3/8" hole
- 1" wide: K26—K29



## Cable Machine Accessories:





**Gorlitz GO3500 & GO4000: 1 1/2" - 10"**

- Both include **18 hp, 688cc Honda engine**
- Removable reel with stainless swivel and adjustable reel brake, quick disconnect fittings from the hose reel and pump, 3/8" x 300' jetter hose, 1/8" x 75' jetter hose (1 1/2" - 3" pipes), electric start, 7 nozzles, nozzle cleaning kit, trigger gun, gloves, face shield, toolbox: 310 lbs

36"L x 24"W x 46"H

**GO 3500 5.5 gpm****GO 4000 10 gpm****Gorlitz GO3000: 1 1/2" to 8" drains**

Blast, **13 hp Honda, 3000 psi, 4.5 gpm**, electric start, hydro-pulsation, 7 nozzles, nozzle cleaning kit, trigger gun, liquid injector, mesh filter, pressure regulator, back flow check valve, adjustable reel brake, pressure safety valve, gloves, face shield, toolbox, 31"L x 25"W x 40"H, 185 lbs  
Includes 1/8" x 75' or 3/8" x 300' jetter hose:

**Gorlitz GO1500 1 1/2" to 4" pipes**

- 2 hp, Largest 120 VAC electric motor available
- 1500 psi, 2.1 gpm, duplex ceramic plunger pump
- 180F maximum water temperature
- 6 nozzles, cleaning kit, gloves

GO1500: 1/4" x 100' &amp; 1/8" x 50' hoses

GO 1500HR: 1/8" x 50' hose &amp; reel

GO 1500A: 1/8" x 50' jetter hose

GO 1500A: 1/8" x 75' jetter hose

6 nozzles, cleaning kit, gloves

**Jetter Hose**

DynaFlex quality jetter hoses at competitive prices:

Made in USA:

4000 psi: 1/8", 1/4", 3/8", 1/2"

3000 psi: 3/4", 1"

2500 psi: 3/4", 1"



Foot Pedal



Hose Dolly



Hose Caddy

**Jetter Nozzles**

- 1/8", 1/4", 3/8", 1/2"
- Rear jets only or front and rear jets



Leader



Rotating



Laser



Corner



Ball



Drop Head

## Power Mole PD-33M Pipe Bursting Machine

- New compact design, only 20" x 20" footprint
- 11" long cone / pulling eye pulls farther into the pit
- Powered with most excavators or portable power pack
- Pulls 30 tons to burst 3/4" to 6" pipes
- Replaceable cutting blades.
- Hose dolly and cable reel included
- Choose 0, 1, 3 blades
- Quick disassembly
- 6 fpm



## Directional Boring & Pipe Bursting

- Trenchless pipe & conduit installation
- Accurately track and steer
- Uses rods and / or cable
- Simple and durable
- Low cost



### PD4

- 1/2" to 4" pipes, 9 fpm
- 37,714 pounds force

### PD6

- 1/2" to 8" pipes, 7 fpm
- 84,822 lbs force

### PD7

- 1/2" - 12" pipes
- 112,00 lbs force

## Underground Magnetics Directional Boring Locator

- Accurately track position, depth, direction, rotation ...
- "Bore To" mode for fast, easy and accurate boring
- **Depths up to 360 feet**
- **3000 feet** distance
- 10 sonde choices
- Economical prices
- Up to 10 frequencies
- Switch between "Bore To" and "Locate" modes with single button
- Weatherproof withstands water jets, IP68
- On screen depth forecast
- 120 hour transmitter back up power
- Downhole frequency and power switch
- Real time drilling management to view bore data, charts, collect GPS data, view bore data remotely, create and share PDF reports, precise mapping



Thank for viewing our catalog. Since 2002 RJM Equipment Sales, Inc. provides the best service, support, sales and training at purchase and for happy customers forever. We have factory trained technicians for camera and other service. Our new website: [www.rjmutilityequipment.com](http://www.rjmutilityequipment.com) offers online purchasing. (not RJM Precision)



### RJM Equipment Sales, Inc

800-620-4773, 360-828-5732  
9808 NE 134th Ave, Vancouver, WA 98682  
Sales Manager: **Brian Moss**  
[brianmoss@rjmcompany.com](mailto:brianmoss@rjmcompany.com)

